

Proportional Relief Valve

Model: DBET and DBETE



- ◆ Size 6
- ◆ Maximum working pressure 350 bar
- ◆ Maximum working flow 2 L/min

Contents

Function description, sectional drawing	02
Models and specifications	03
Functional symbols	03
Technical parameters	04
Electrical connections	05
Characteristic curve	05-07
Component size	08-09

Features

- Direct actuated valve
- Operation by proportional solenoids with central thread and detachable coil
- For subplate mounting
- Model DBETE: internal integrated amplifier
- Model DBET: external control amplifier

Any part of this brochure can not be reproduced, edited, copied and disseminated electronically in any way without authorization of Jiayite Hydraulics company. As the product is in constant development and innovation, the information in this brochure is not specific to the special conditions or applicability of a specific industry, thus Jiayite Hydraulics company is not responsible for any incomplete or inaccurate description generated.



Function description, sectional drawing

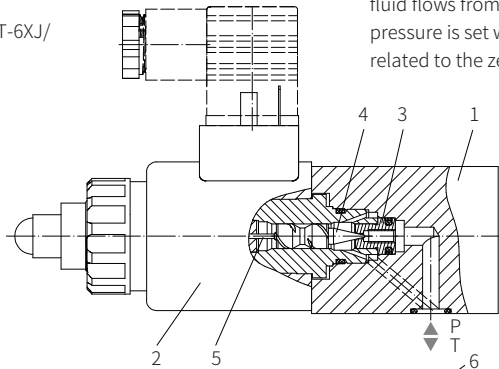
Overview

Model DBETE (Integrated Electronic Control)
The function and design of this valve are the same as the DBET type. There is an additional plug type proportional amplifier (6) on the proportional solenoid, which is included in the electronic control.
The plug (7) receives power and command value.
The command value pressure characteristic curve is pre-set by the manufacturer based on the principle of minimum manufacturing tolerance.
For more detailed instructions on integrated electronic controllers, please refer to the instructions.

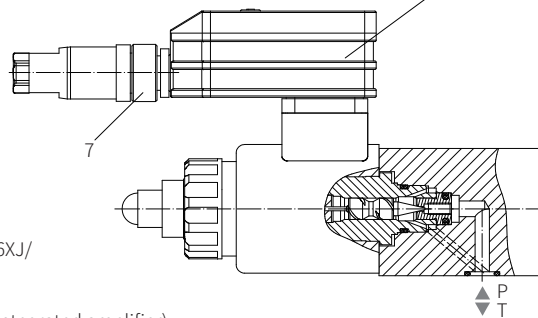
Operating Principle:

The system pressure is regulated by the command value of the electronic controller which supplies a current to the solenoid based on the command value. The proportional solenoid converts the current into mechanical force and acts on the poppet valve (4) through the armature pin (5). The poppet valve (4) presses on the valve seat (3) directly, thereby closing the connection from port P to T.
If the hydraulic force on the poppet valve (4) is equal to the solenoid force, then the valve controls the set pressure by lifting the poppet valve (4) off the valve seat (3), and thus allowing the pressure fluid flows from port P to T. The minimum setting pressure is set with minimum control current related to the zero command value.

Model DBET-6X/J/



Model DBETE-6XJ/



Model DBETE (Integrated amplifier)

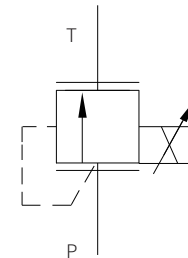
The function and design of this valve is same as model DBET.
There is an additional plug type proportional amplifier (6) with electric controller on the proportional solenoid. The connector (7) receives power and command value. The command value pressure characteristic curve is pre-set based on the minimum manufacturing tolerance principle by the manufacturer. For more detailed information on the integrated amplifier, please refer to the instructions.

Models and specifications

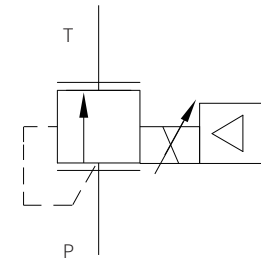
DBET	-	6X	/	G24			*	
proportional relief valve								more information in text
external amplifier	=No code							sealing material
integrated amplifier	=E							No code= NBR seals
60 to 69 series (60 to 69 series installation and connection size unchanged)	=6X							V= FKM seals (consult for other seals)
Rekith	=J							for model DBETE
maximum pressure stage								A1= command value 0 to 10 V
up to 50bar	=50							F1= command value 4 to 20 mA
up to 100bar	=100							DBET electrical connection:
up to 200bar	=200							K4= Square socket without plug
up to 315bar	=315							Z4= Square socket with plug
up to 350bar	=350							DBETE electrical connection:
supply voltage								K31S= With 1.5 meter cable and tin on the end
24VDC	=G24							K31C= With M12 × 1 aviation plug, 5-pin
								No code= 1600mA coil
								-8 800mA coil

Functional symbols

external amplifier (model DBET)



integrated amplifier (model DBETE)



Technical parameters

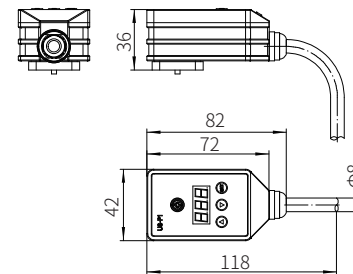
Overview		DBET	DBETE
Installation position		Optional	
Storage temperature range	°C	-20 to +80	
Environment temperature range	°C	-20 to +70	-20 to +50
Weight	kg	2.0	2.15

Hydraulic (measured when using HLP46, $\vartheta_{oil}=40^{\circ}\text{C} \pm 5^{\circ}\text{C}$)		DBET	DBETE
Maximum working pressure	Port P	bar	
		350	
Maximum adjustable pressure	Pressure stage 50	bar	
		50	
	Pressure stage 100	bar	
		100	
	Pressure stage 200	bar	
		200	
	Pressure stage 315	bar	
		315	
	Pressure stage 350	bar	
		350	
Minimum setting pressure (at command value 0V or 40 mA)		bar	
		See characteristic curves	
Return flow pressure	Port T	bar	
		Separate and at zero pressure to tank	
Maximum flow		L/min	
		2	
Linearity		%	
		± 3.5 of maximum setting pressure	
Hysteresis		%	
		± 2 of maximum setting pressure	
Repeatability		%	
		$< \pm 2$ of maximum setting pressure	
Switching time		ms	
		30 to 150 (depending on system)	

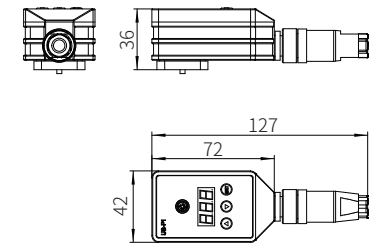
Electrical parameters	
Voltage type	24VDC
Minimum control current	mA
	100
Maximum control current	mA
	800 or 1600
Coil resistance	Ω
	Cold value at 20°C 5.5 Ω , Maximum warm value: 8.05 Ω
Duty	Continuous
Electrical connections	Plug-in connector to DIN EN175301-803
Class of protection	IP65
Amplifier	RT-PQDA-1 (2) (external) US-P1 (plug type proportional amplifier)

Electrical connections

Model DBETE-6XJ/...K31S

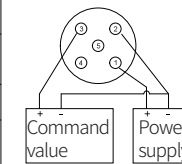
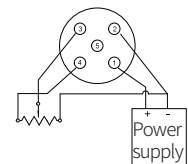


Model DBETE-6XJ/...K31C



Terminal Definition

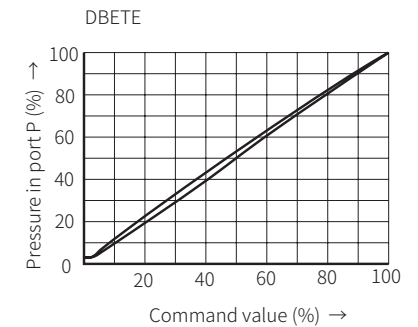
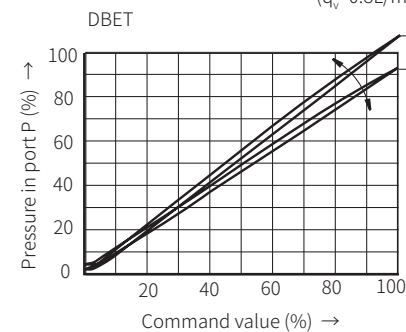
M12 plug terminal number (K31C type)	Cable color (K31S type)	Terminal Definition
1	Red	Power supply+
2	Black	Power supply -/ command value-
3	Yellow	Command value+
4	Blue	Reference voltage 5V
5	Green	-

Connection example:
PLC input commandConnection example:
Potentiometer input command

Characteristic curve

(measured when using HLP46, $\vartheta_{oil}=40^{\circ}\text{C} \pm 5^{\circ}\text{C}$)

Pressure in port P in relation to the command value

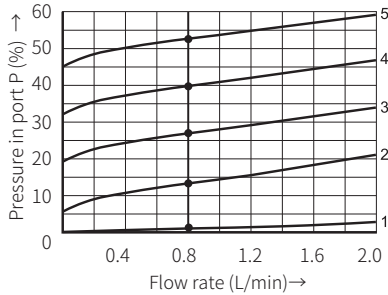
 $(q_v=0.8\text{L/min})$ 

Characteristic curve

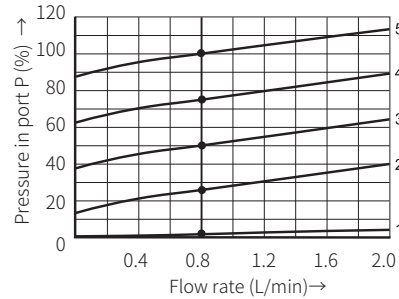
(measured when using HLP46, $\vartheta_{oil}=40^{\circ}\text{C} \pm 5^{\circ}\text{C}$)

Pressure in port P in relation to the flow rate

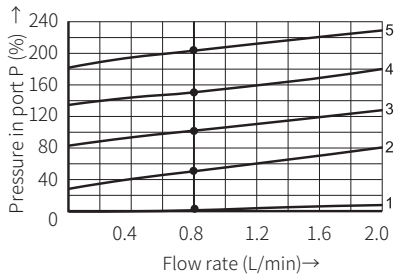
Pressure stage 50bar



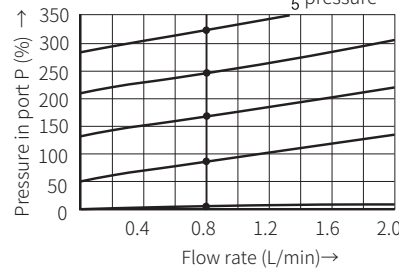
Pressure stage 100bar



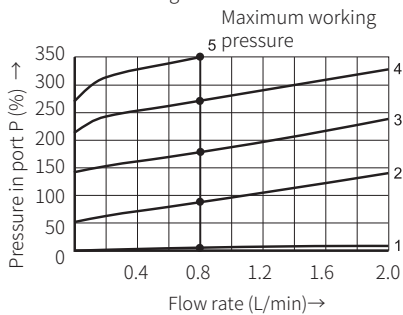
Pressure stage 200bar



Pressure stage 315¹⁾ bar Maximum working pressure



Pressure stage 350bar



¹⁾ For characteristic curve 5, the command value should not exceed the flow rate of 1.4L/min.

Valid for all pressure stage:

Curve 1=0% command value

Curve 2=25% command value

Curve 3=50% command value

Curve 4=75% command value

Curve 5=100% command value²⁾

The characteristic curve is measured without any back pressure in port T ($P_T=0$ bar).

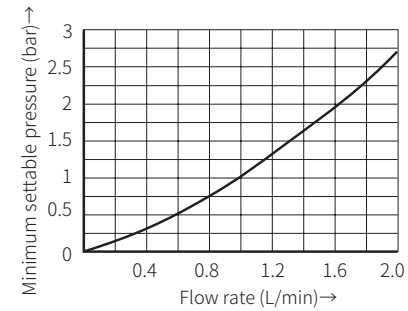
²⁾ For pressure stage 350 bar and characteristic curve 5, the command value should not exceed the flow rate of 0.8L/min

Characteristic curve

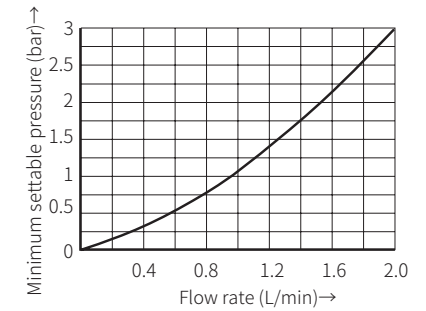
(measured when using HLP46, $\vartheta_{oil}=40^{\circ}\text{C} \pm 5^{\circ}\text{C}$)

Minimum settable pressure in port P with command value 0

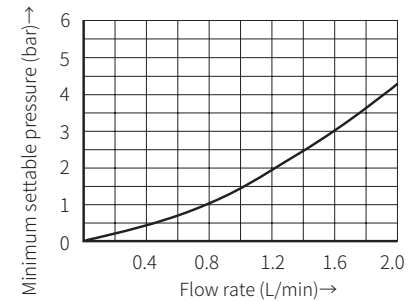
Pressure stage 50bar



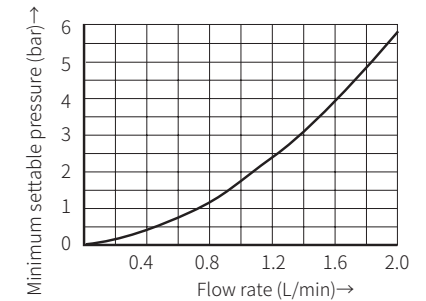
Pressure stage 100bar



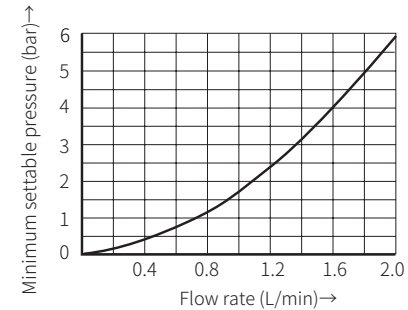
Pressure stage 200bar



Pressure stage 315bar



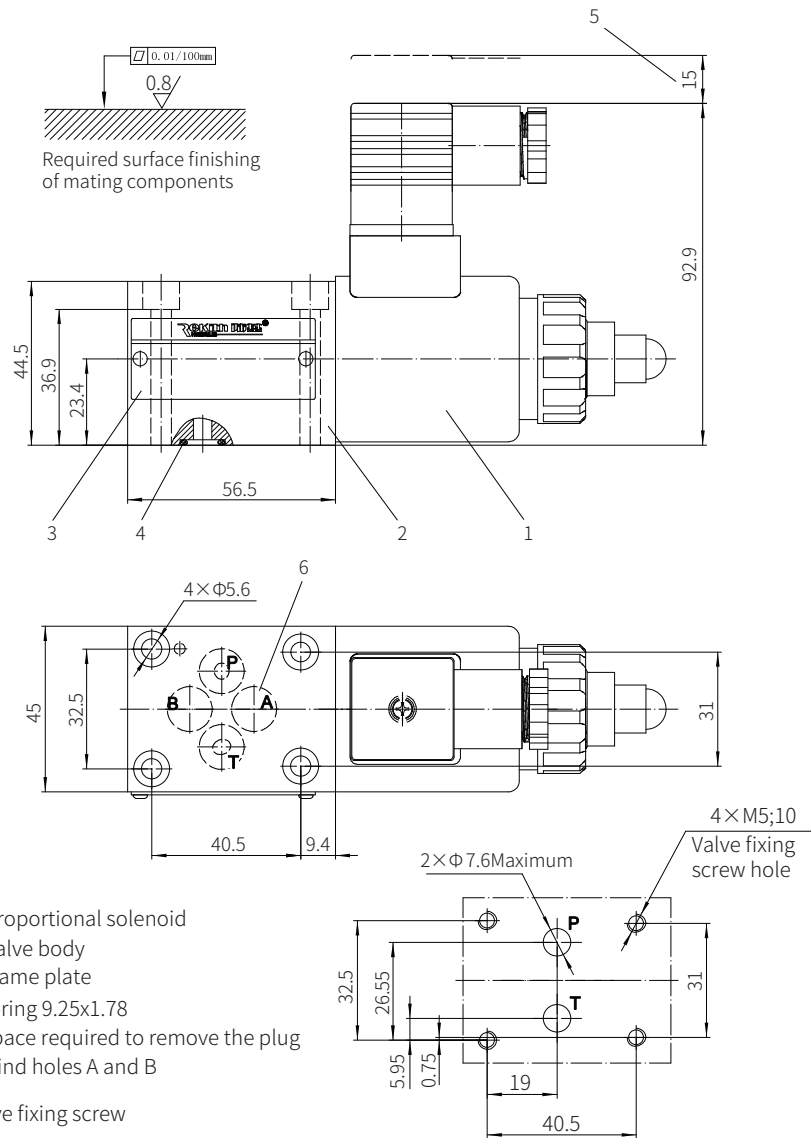
Pressure stage 350bar



Component size

Size unit: mm

Model DBET-6XJ/...



1. Proportional solenoid
2. Valve body
3. Name plate
4. O-ring 9.25x1.78
5. Space required to remove the plug
6. blind holes A and B

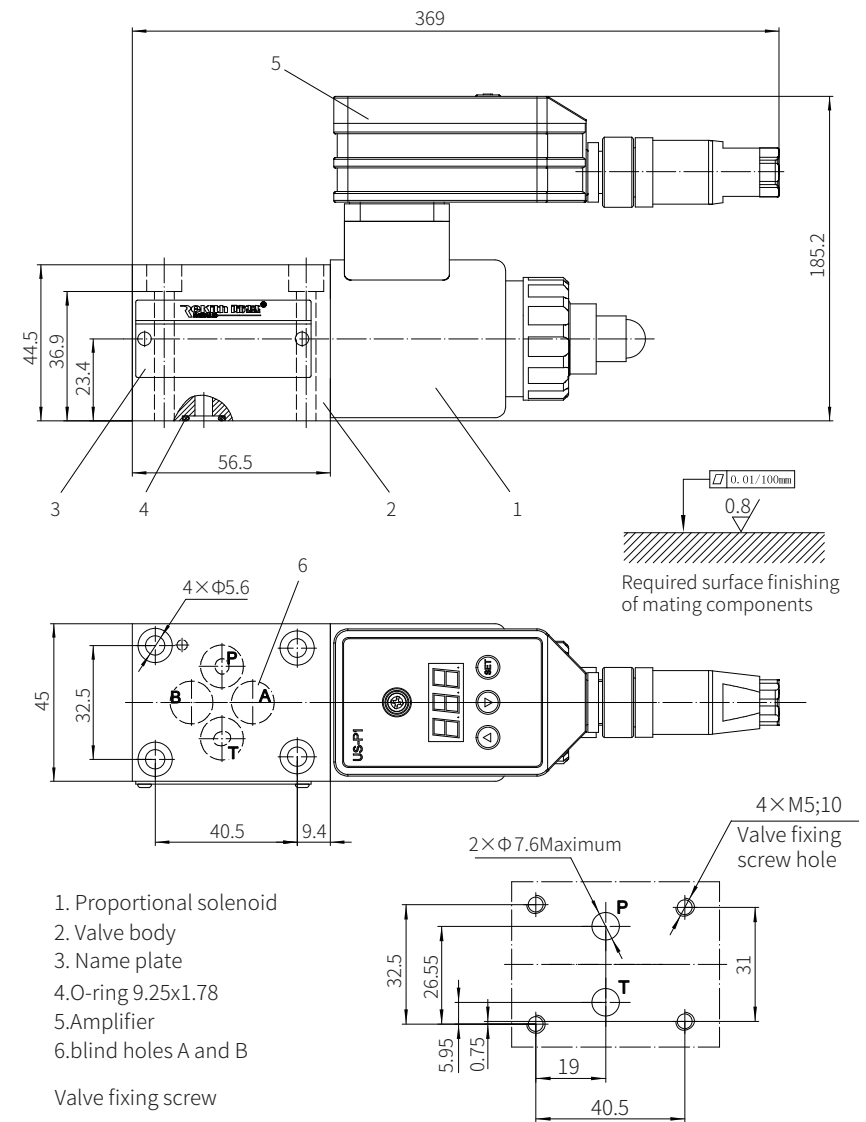
Valve fixing screw
M5x45-10.9 grade GB/T70.1-2000
Tightening torque $M_A=7.8\text{Nm}$

0740

Component size

Size unit: mm

Model DBETE-6XJ/...



1. Proportional solenoid
2. Valve body
3. Name plate
4. O-ring 9.25x1.78
5. Amplifier
6. blind holes A and B

Valve fixing screw
M5x45-10.9 grade GB/T70.1-2000
Tightening torque $M_A=7.8\text{Nm}$

0741