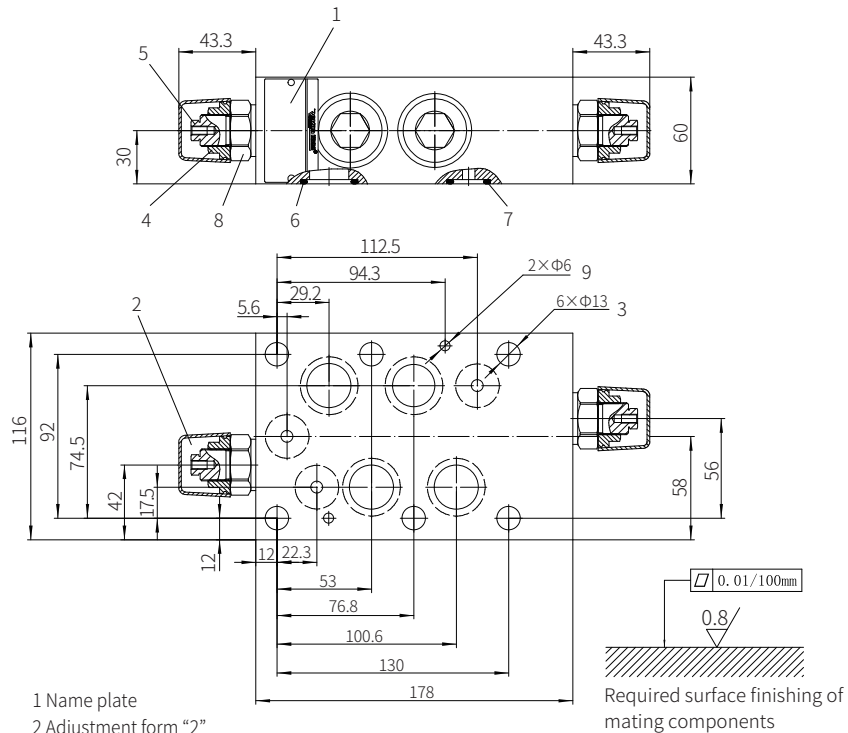


Component size

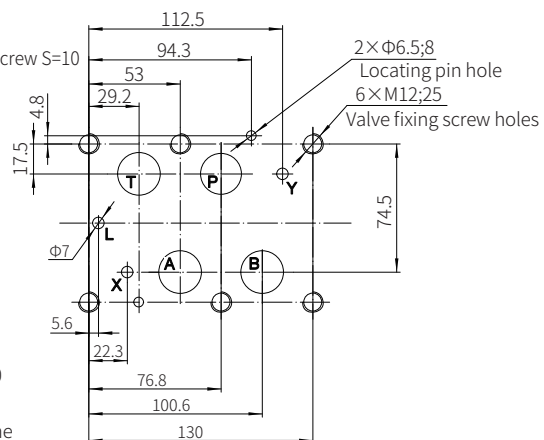
Size unit: mm

Model Z2DB22VD...-3XJ/...



- 1 Name plate
- 2 Adjustment form "2"
- 3 Valve fixing screw holes
- 4 Locknut S=24
- 5 External hexagon adjustment screw S=10
- 6 O ring 27x3
(for oil port P, A, B, T)
- 7 O ring 19x3
(for oil port X, Y, L)
- 8 External hexagon S=30
- 9 Locating pin hole

Valve fixing screw
M12-10.9 grade GB/T70.1-2000
Tightening torque $M_A=95\text{Nm}$
The length is determined by the
stacking height and must be ordered
separately



Balanced Valve

Model DC...-1XJ



- ◆ Size 10 to 30
- ◆ Maximum working pressure 315 bar
- ◆ Maximum working flow 330 L/min

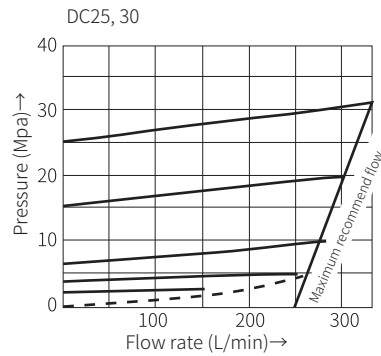
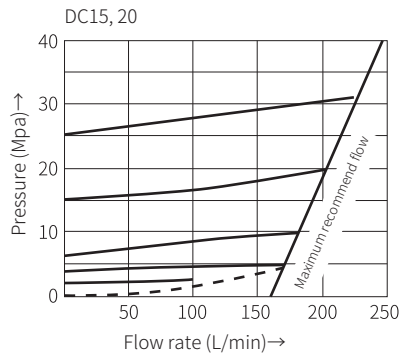
Contents

| | |
|---|-------|
| Function description, sectional drawing | 02 |
| Models and specifications | 02 |
| Functional symbols | 03 |
| Characteristic curve | 03-04 |
| Component size | 05-06 |

Features

- Subplate mounting
- Threaded connection
- 3 adjustment elements
 - Rotary knob
 - Inner hexagon screw with protective cap
 - Lockable rotary knob
- 5 pressure ratings

Characteristic curve

(Measured when using HLP46, $t_{oil}=40^{\circ}\text{C} \pm 5^{\circ}\text{C}$)

----- Minimum adjusting pressure

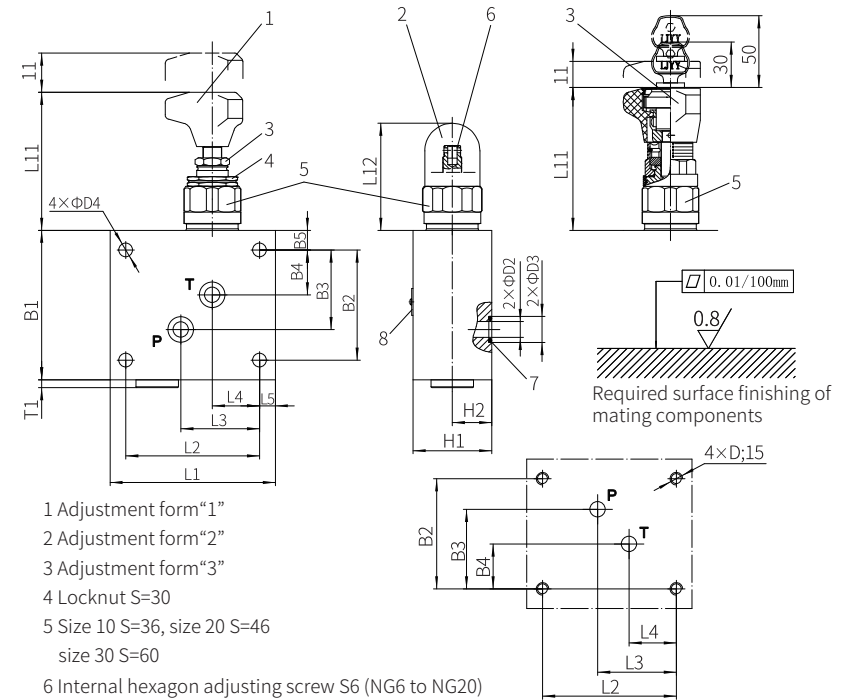
02

0376

Component size

Size unit: mm

Model DC...P...-1XJ/..., subplate mounting



- 1 Adjustment form "1"
 - 2 Adjustment form "2"
 - 3 Adjustment form "3"
 - 4 Locknut S=30
 - 5 Size 10 S=36, size 20 S=46
size 30 S=60
 - 6 Internal hexagon adjusting screw S6 (NG6 to NG20)
External hexagon adjusting screw S13 (NG25 to NG30)
 - 7 O ring 12.3X2.4(size 10)
O ring 22X3 (size 20)
O ring 34X3 (size 30)
 - 8 Name plate
- Valve fixing screw
Size 10: M8x50-10.9 grade GB/T70.1-2000
Tightening torque $M_A=34.3\text{Nm}$
Size 20: M12x80-10.9 grade GB/T70.1-2000
Tightening torque $M_A=95\text{Nm}$
Size 30: M16x120-10.9 grade GB/T70.1-2000
Tightening torque $M_A=196\text{Nm}$

| Size | L1 | L2 | L3 | L4 | L5 | L11 | L12 | B1 | B2 | B3 | B4 |
|------|-----|-----|----|----|----|-----|-----|-----|-----|------|------|
| 10 | 105 | 85 | 50 | 30 | 10 | 79 | 68 | 95 | 70 | 50.5 | 28.5 |
| 20 | 145 | 115 | 65 | 35 | 15 | 77 | 65 | 135 | 85 | 63 | 29 |
| 30 | 180 | 150 | 75 | 45 | 15 | - | 83 | 175 | 125 | 82 | 35 |

| Size | B5 | H1 | H2 | D1 | D2 | D3 | D4 | T1 | D |
|------|------|----|----|----|----|------|----|----|-------|
| 10 | 12.5 | 50 | 25 | 38 | 10 | 17.8 | 9 | 4 | 4×M8 |
| 20 | 25 | 60 | 30 | 46 | 20 | 27.7 | 13 | 4 | 4×M12 |
| 30 | 25 | 80 | 40 | 63 | 30 | 41.6 | 17 | 5 | 4×M16 |

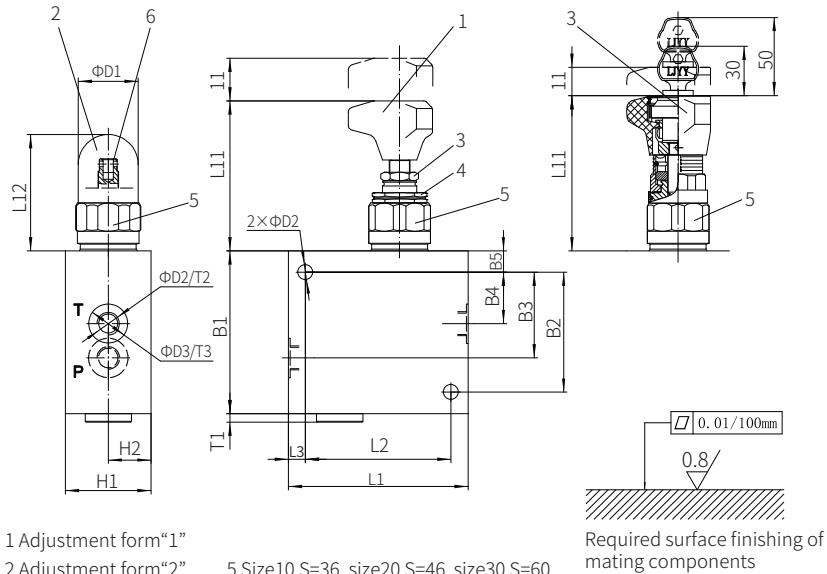
02

0377

Component size

Size unit: mm

Model DC...G...-1XJ/..., threaded connection



- 1 Adjustment form "1"
 2 Adjustment form "2"
 3 Adjustment form "3"
 4 Locknut S=30
 5 Size10 S=36, size20 S=46 size30 S=60
 6 Internal hexagon adjusting screw S6 (NG6 to NG20)
 External hexagon adjusting screw S13 (NG25 to NG30)

| Size | L1 | L2 | L3 | L11 | L12 | B1 | B2 | B3 | B4 | B5 |
|------|-----|-----|----|-----|-----|-----|-----|------|------|------|
| 6 | 105 | 85 | 10 | 83 | 72 | 95 | 70 | 50.5 | 28.5 | 12.5 |
| 10 | | | | 79 | 68 | | | | | |
| 15 | 140 | 110 | 15 | 77 | 65 | 135 | 85 | 63 | 29 | 25 |
| 20 | | | | | | | | | | |
| 25 | 180 | 150 | 15 | - | 83 | 175 | 125 | 82 | 35 | 25 |
| 30 | | | | | | | | | | |

| Size | H1 | H2 | D1 | D2 | D3 | D | T1 | T2 | T3 |
|------|----|----|----|----|----|-----------------|----|----|----|
| 6 | 50 | 25 | 34 | 9 | 25 | M14×1.5 (G1/4") | 4 | 16 | 1 |
| 10 | | | 38 | | 38 | M22×1.5 (G1/2") | | 15 | |
| 15 | 60 | 30 | 48 | 14 | 45 | M27×2 (G3/4") | 7 | 18 | 1 |
| 20 | | | | | 52 | M33×2 (G1") | | 20 | |
| 25 | 80 | 40 | 63 | 18 | 63 | M42×2 (G1 1/4") | 8 | 23 | 1 |
| 30 | | | | | 65 | M48×2 (G1 1/2") | | | |

Cartridge Pilot Pressure Relief Valve

Model: DB...K...XJ



- ◆ Size 6/10/20
- ◆ Maximum working pressure 315bar
- ◆ Maximum working flow 300 L/min

Contents

| | |
|---|-------|
| Function description, sectional drawing | 02 |
| Models and specifications | 03 |
| Technical parameters | 03 |
| Characteristic curve | 04 |
| Component size | 05-07 |

Features

- Cartridge connection
- 4 pressure range
- 4 adjustment form
 - Rotary knob
 - Internal hexagon adjusting screw with protective cap
 - Lockable rotary knob with scale
 - Rotary knob with scale