

Application examples

These examples only indicate some applications of the poppet valve but not include all functions.

<p>Symbol C</p>	<p>Symbol U</p>
<p>Symbol U</p>	<p>Symbol C</p>
<p>Symbol C</p>	<p>Symbol U</p>
<p>Symbol C</p>	
<p>Symbol U</p>	

Explosion-proof Solenoid Operated Poppet Valve

Model: G-M-SEW10...1XJ



- ◆ Size 10
- ◆ Maximum working pressure 420/630 bar
- ◆ Maximum working flow 40 L/min

Contents

Function description, sectional drawing	02-03
Models and specifications	04
Technical parameters	05
Characteristic curve	06
Characteristic limit	06
Component size	07-09
Application examples	10

Features

- Closed port without leakage
- Switching flexibility even in high-pressure state long periods
- Air-gap DC solenoid with detachable coil
- Solenoid coil can be rotated 90°

Function description, sectional drawing

3/2-way directional seat valve

General:

The G-M-SEW directional valve is explosion-proof solenoid operated poppet valve. It is used to control the opening, closing and direction of liquid flow.

The valve mainly includes valve body (1), solenoid (2), hardened valve system (3) and ball (4) as the closing element.

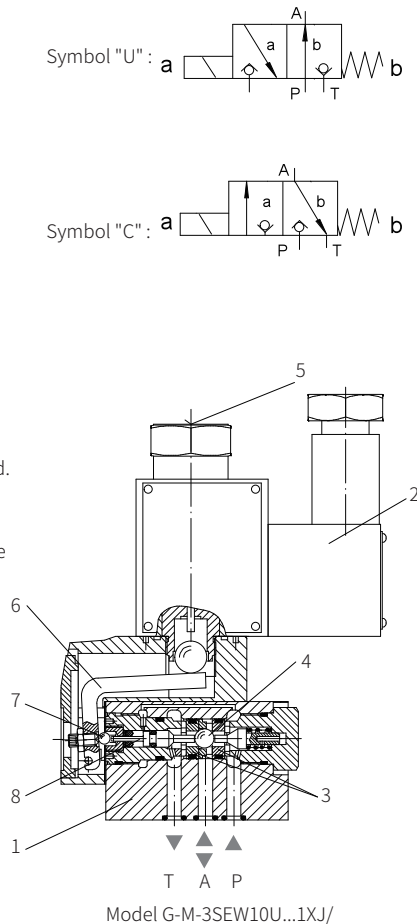
Basic function:

In the initial position, the spool (4) is pushed to the seat by the spring (9) and by the solenoid (2) when in the switching position. The force of the solenoid (2) acts on the actuating push rod (8) which is sealed on both sides through the lever (6) and the ball (7). The chamber between the two sealing elements is connected to the port P. Therefore, the valve system (3) is pressure compensated based on the actuating force (solenoid or spring). In this way, the valve can be used up to 630bar.

Note:

The 3/2-way poppet directional valve has negative cover function. Therefore, the port T must be always connected. That means the ports P-A-T are connected with each other during the switching process (from the starting of the opening of one valve seat to the closing of other valve seat). But this process is completed in a very short time, so it is irrelevant in almost all applications.

It must ensure that the maximum flow does not exceed the performance limit of the valve. If necessary, the cartridge throttle can be installed to limit flow.

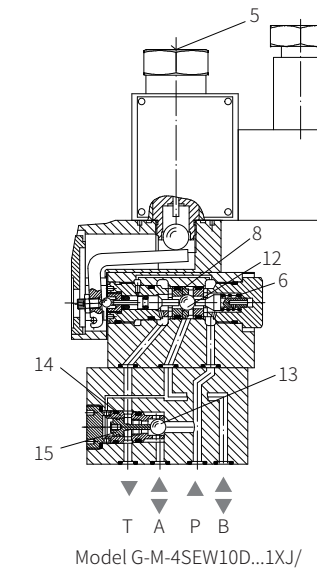


Function description, sectional drawing

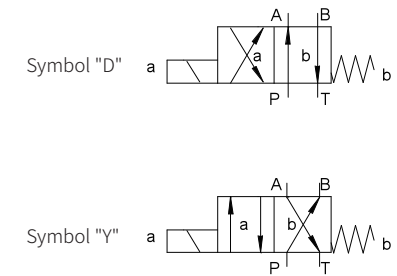
4/2-way poppet directional valve

Initial position: When the solenoid is not energized, the force of the spring (6) holds the ball spool (12) on the left valve seat (8). The port P is connected with A. The pump pressure oil acts on the large area of the control piston (15) through the control line from port A. The steel ball (13) is pushed to the other side of the valve seat (14), so the oil port P is connected to A and B to T.

Switching position: After the solenoid is powered on, the oil port A acts on the large area of the control piston (15) to unload to the tank. In addition, the control line from the oil port A acts on the large area of the control piston (15) to unload to the tank. The pressure oil provided from the oil port P pushes the steel ball (13) to the valve seat (14). At this time, the oil port P is connected to B.



The seat valve with plus-1 plate as below:



Cartridge throttle

Due to the working conditions limitations, it may occur that the flow exceeds the performance limit of the valve during the switching process, then the use of a throttle is required.

Example:

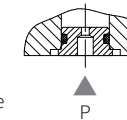
- Accumulator operation
- Used as a pilot valve with internal pilot oil supply

3/2-way poppet valve

The throttle is inserted into the port P of the directional valve.

4/2-way poppet valve

The throttle is inserted into the oil port P of the plus-1 plate.



Cartridge check valve

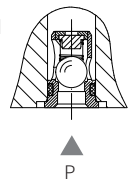
The cartridge check valve allows free flow from P to A and leak-free closure from A to P.

3/2-way poppet valve

The cartridge check valve is inserted into the oil port P of the directional valve.

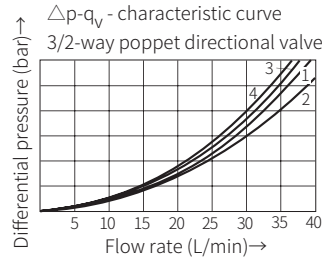
4/2-way poppet valve

The cartridge check valve is inserted into port P of the plus-1 plate.

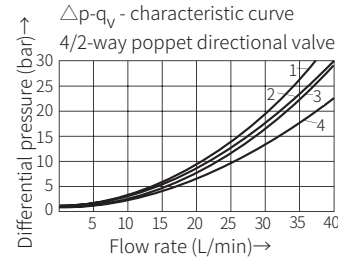
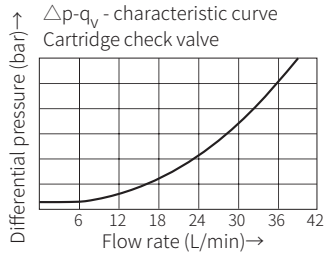


Characteristic curve

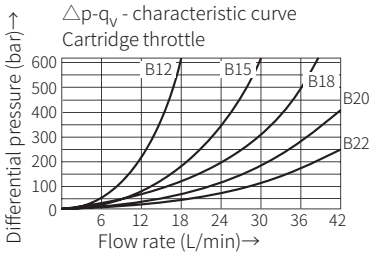
(Measured when using HLP46, $\vartheta_{oil} = -40^{\circ}C \pm 5^{\circ}C$)



1 G-M-3SEW10C..., P to A 3 G-M-3SEW10U..., P to A
2 G-M-3SEW10C..., A to T 4 G-M-3SEW10U..., A to T



1 G-M-4SEW10^D..., A to T 3 G-M-4SEW10^D..., P to B
2 G-M-4SEW10^D..., P to A 4 G-M-4SEW10^D..., B to T



Characteristic limit

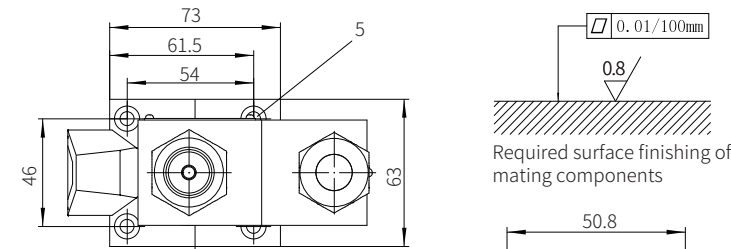
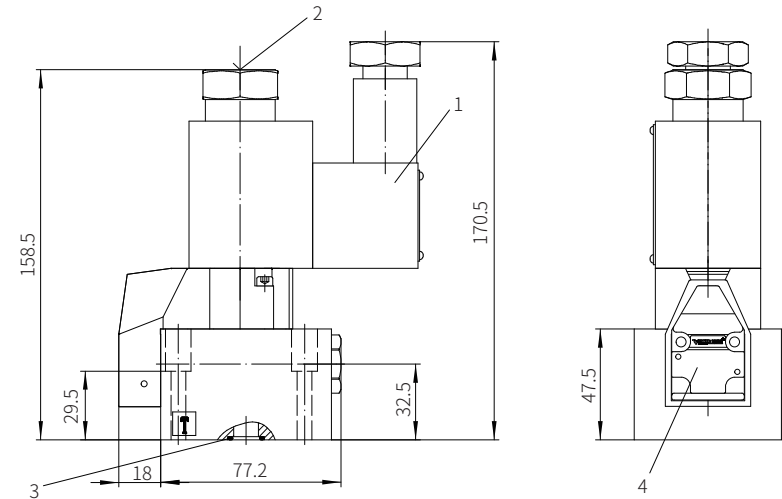
	Functional symbol	comment	Working pressure bar				Flow L/min
			P	A	B	T	
Three-way circuit		Oil port pressure $P \geq A \geq T$	420/630	420/630		100	40
			420/630	420/630		100	40
Two way circuit (Only for unloading function)		Pressure must be maintained in port A before switching from the original position to the switching position. Oil port pressure $A \geq T$		420/630		100	40
		Oil port pressure $A \geq T$		420/630		100	40
Four-way circuit (flow only in the direction of arrows)		Single poppet valve (symbol "U") with the plus-1 plate $P \geq A \geq B \geq T$	420/630	420/630	420/630	100	40
		Double poppet valve (symbol "C") with the plus-1 plate $P \geq A \geq B \geq T$	420/630	420/630	420/630	100	40

The characteristic limit is measured when the solenoid is at operating temperature, at 10% below the standard voltage and without tank preloading.

Component size

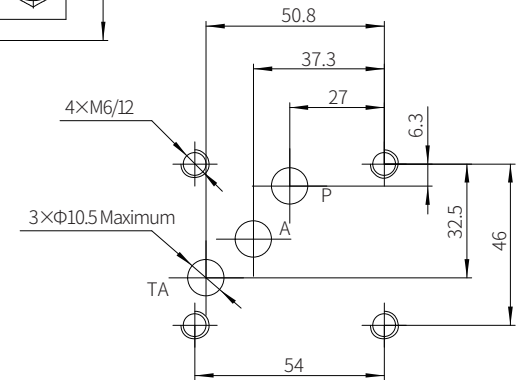
Size unit: mm

3/2-way poppet directional valve, 420bar



- 1 Solenoid
- 2 Hidden emergency button
- 3 O-ring 10x2 (for oil ports A, B, T)
O-ring 14x1.78 (for oil port P)
- 4 Name plate
- 5 Valve connecting holes

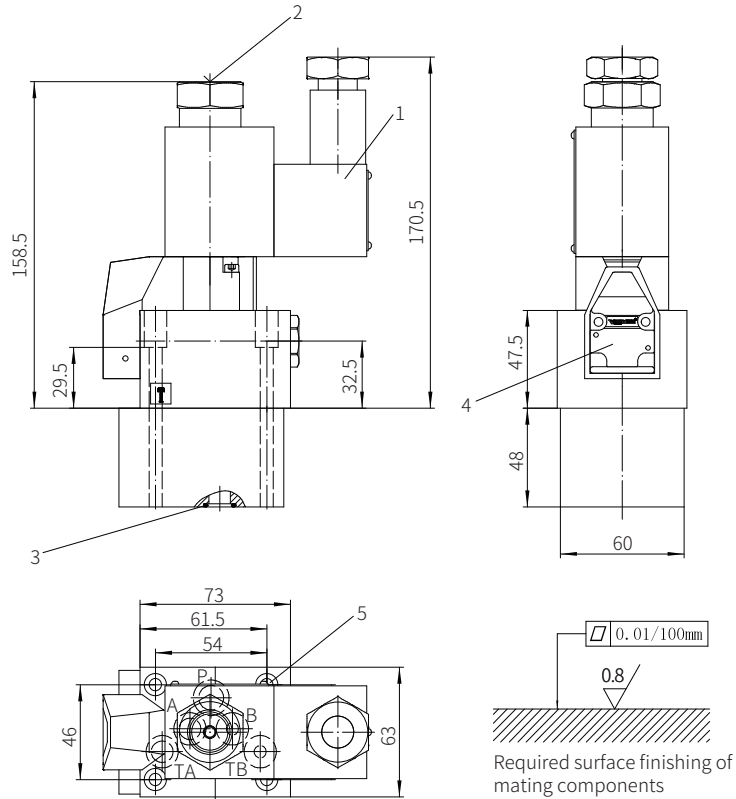
Valve fixing screw
M6x40-10.9 grade GB/T70.1-2000
Tightening torque $M_A = 13.7Nm$



Component size

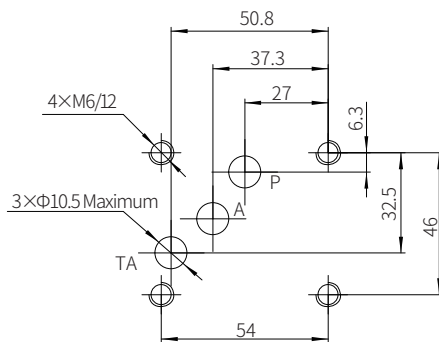
Size unit: mm

4/2-way poppet directional valve, 420bar



- 1 Solenoid
- 2 Hidden emergency button
- 3 O-ring 10x2(for oil ports A, B, T)
O-ring 14x1.78(for oil port P)
- 4 Name plate
- 5 Valve connecting holes

Valve fixing screw
 M6x90-10.9 grade GB/T70.1-2000
 Tightening torque $M_A=13.7\text{Nm}$

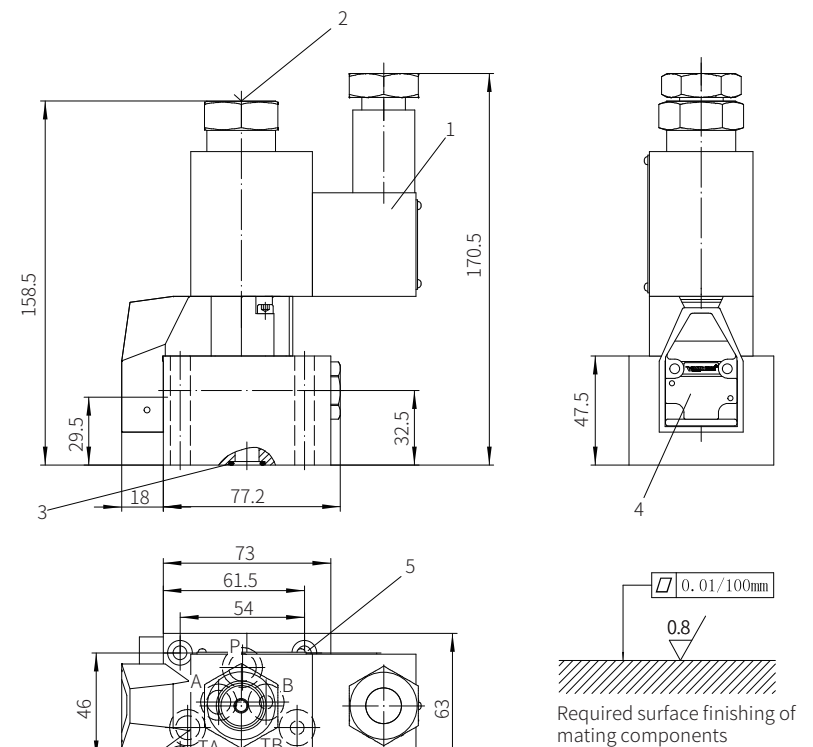


0308

Component size

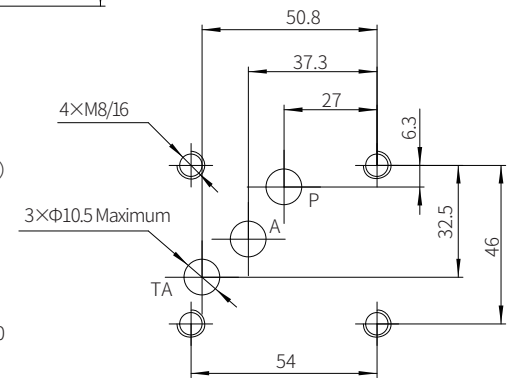
Size unit: mm

3/2-way poppet directional valve, 630bar



- 1 Solenoid
- 2 Hidden emergency button
- 3 O-ring 10x2(for oil ports A, B, T)
O-ring 14x1.78(for oil port P)
- 4 Name plate
- 5 Valve connecting holes

Valve fixing screw
 M8x60-10.9 grade GB/T70.1-2000
 Tightening torque $M_A=34.3\text{Nm}$



0309

Application examples

These examples only indicate some applications of the poppet valve but not include all functions.

<p>Symbol C</p>	<p>2/2-way circuit with two poppet valves and check valve at port A The check valve must be installed on the pipeline. Initial position: the flow is blocked and the maximum pressure is allowed. Due to the check valve at port A, the pressure is held in the actuator even when the pump is turned off. Switching position: The fluid flows freely and the maximum pressure is allowed. The oil is drained via port T. The only oil leakage occurring is that the oil flows to port T during the switching process.</p>	<p>Symbol U</p>	<p>3/2-way circuit with a single poppet valve Initial position: Lifting The maintenance of position only depends on the stroke limit and the pressure at port P. Switching position: Descending</p>
<p>Symbol U</p>	<p>2/2-way circuit with a single poppet valve and check valve at port A The check valve must be installed on the pipeline. Initial position: The fluid flows freely and the maximum pressure is allowed. Due to the check valve at port A, the pressure is held in the actuator even when the pump is turned off. Switching position: The flow blocked and the maximum pressure is allowed. The oil is drained via port T. The only oil leakage occurring is that the oil flows to port T during the switching process.</p>	<p>Symbol C</p>	<p>3/2-way circuit with two poppet valves and cartridge check valve at port A The check valve is installed at port P of the 3/2-way directional poppet valve. Initial position: Descending Switch position: Lifting The load can be held in any position when the pump is turned off and the solenoid is energized.</p>
<p>Symbol C</p>	<p>3/2-way circuit with two poppet valves Initial position: Descending Switch position: Lifting The maintenance of position only depends on the stroke limit and the pressure at port P.</p>	<p>Symbol U</p>	<p>3/2-way circuit with a single poppet valve and cartridge check valve at port P The check valve is installed at port P of the 3/2-way popper valve. Initial position: Lifting The load can be held in any position when the pump is turned off. Switching position: Descending</p>
<p>Symbol C</p>	<p>4/3-way (4/4-way) circuit with two poppet valves V1 and V2 in the initial position: both ends of the cylinder are connected to the oil tank port. V2 in the switching position: the piston moves to the left. V1 in the switching position: the piston moves to the right. V1 and V2 in the switching position: both ends of the cylinder are connected to the pump port. The fast movement is possible when a single rod cylinder with an area ratio of 2:1 is used. Attention! When using single rod cylinders, the performance limit (double flow) of the valve and the maximum permissible working pressure (overpressure) must be taken into account!</p>		
<p>Symbol U</p>	<p>4/3-way (4/4-way) circuit with two poppet valves and cartridge check valve at port P of the 3/2-way poppet valve V1 and V2 in the initial position: the piston is locked externally to prevent oil flow. V2 in the switching position: the piston moves to the right. V1 in the switching position: the piston moves to the left. V1 and V2 in the switching position: both ends of the cylinder are connected to the tank port. Attention! When using single rod cylinders, the performance limit (double flow) of the valve and the maximum allowable working pressure (overpressure) must be taken into account!</p>		

Explosion-proof Electro-hydraulic Directional Valve

Model: G-WEH...4X/6X/7XJ



- ◆ Size 10~32
- ◆ Maximum working pressure 350 bar
- ◆ Maximum working flow 1100 L/min

Contents

Function description, sectional drawing	02-03
Models and specifications	04
Functional symbols	05-07
Technical Parameters	08-09
Characteristic curve	10-14
Characteristic limit	10-14
Switching time adjustment, pressure reducing valve and pre-load valve	15
Component size	16-24

Features

- Mainly used to control the opening closing and flow direction of liquid flow
- Subplate mounting
The mounting surface according to DIN24340 form A and ISO4401
- Spring or hydraulic centered
Spring or hydraulic return to initial position
- Explosion-proof solenoid
- Optional switching time adjustment
- Optional pre-load valve in port P of the main valve