

Explosion-proof Solenoid Operated Directional Valve with Emergency Handle

Model: GD-4WEMM6(10).../...



- ◆ Size 6 to 10
- ◆ Maximum working pressure 350 bar
- ◆ Maximum flow rate 120 L/min

Contents

Function description, sectional drawing	02
Models and specifications	02
Technical parameters	03
Functional symbols	03
Component size	04-05

Features

- The opening closing and direction of the flow controlled by the solenoid and manual
- Wet-pin solenoid with detachable coil
- The solenoid coil can rotate 90°
- Subplate mounting

Any part of this brochure can not be reproduced, edited, copied and disseminated electronically in any way without authorization of Jiayite Hydraulics company. As the product is in constant development and innovation, the information in this brochure is not specific to the special conditions or applicability of a specific industry, thus Jiayite Hydraulics company is not responsible for any incomplete or inaccurate description generated.



Function description, sectional drawing

The GD-4WEMM directional valve is a directional spool valve operated by explosion-proof solenoid and control handle. It controls the opening, closing and flow direction of liquid flow.

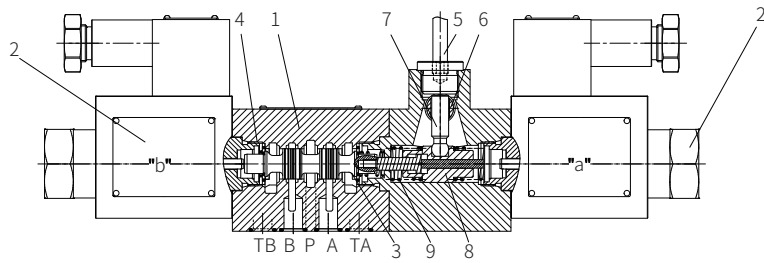
It is mainly composed of valve body (1), one or two solenoids (2), valve spool (3), reset spring (4) and manual control device.

Solenoid operation:

When the solenoid is de-energized, the valve spool (3) is held in the neutral or original position by means of the reset spring. The force of the solenoid (2) acts on the valve spool (3) to push it from the stationary position to the terminal position. In this way, the pressure oil flows from P to A and B to T, or from P to B and A to T. After the solenoid (2) is de-energized, the reset spring (4) pushes the valve spool (3) back to its original position.

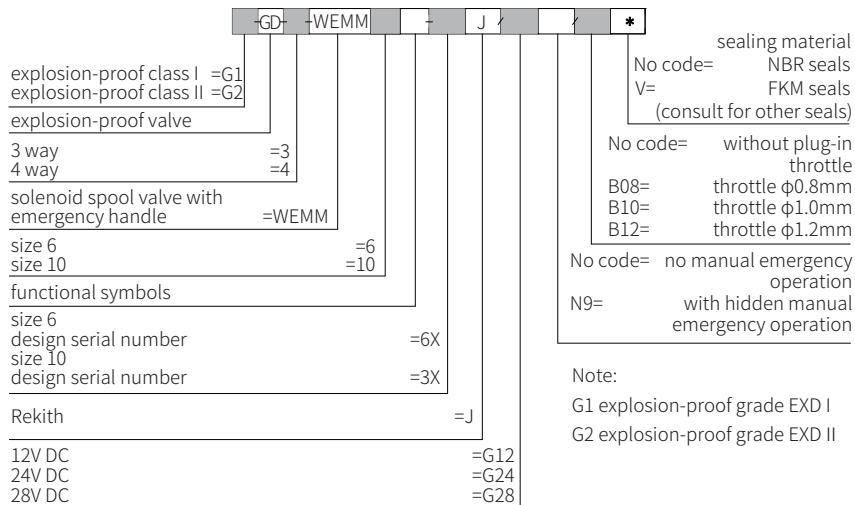
Auxiliary handle operation:

When the solenoid is not energized, the valve spool (3) can be moved by operating the auxiliary handle. Turn the auxiliary handle (5) to the right so that the operating force acts on the valve spool (3) through the spindle (6), the ball valve core (7) and the guide sleeve (8) to move it to the left. When the auxiliary handle (5) returns to the zero position, the valve spool (3) returns to the original position under the action of the reset spring (9).



Model GD-4WEMM10E...3XJ/

Models and specifications



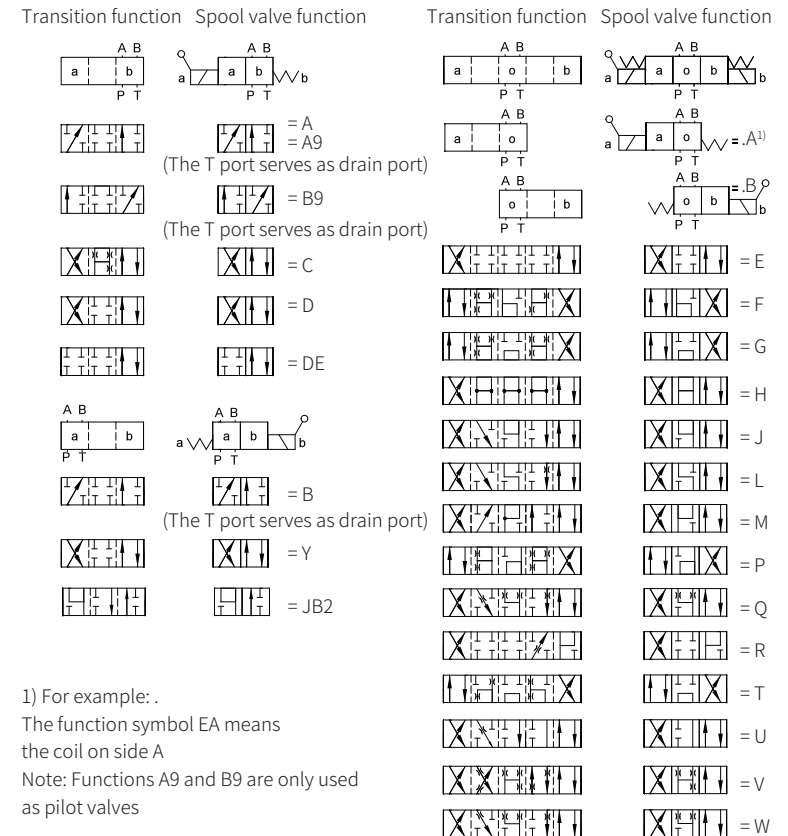
Technical parameters

Working pressure	Mpa	port A,B,P to 35
Pressure in port T	Mpa	to 16(AC), to 21(DC)
Medium		Mineral hydraulic oil or phosphate ester wave pressure oil
Viscosity range	mm ² /s	2.5 to 500
Temperature range	°C	-30 to +80

Note: For symbols A and B, port T must be used as drain port if the working pressure exceeds the allowable pressure.

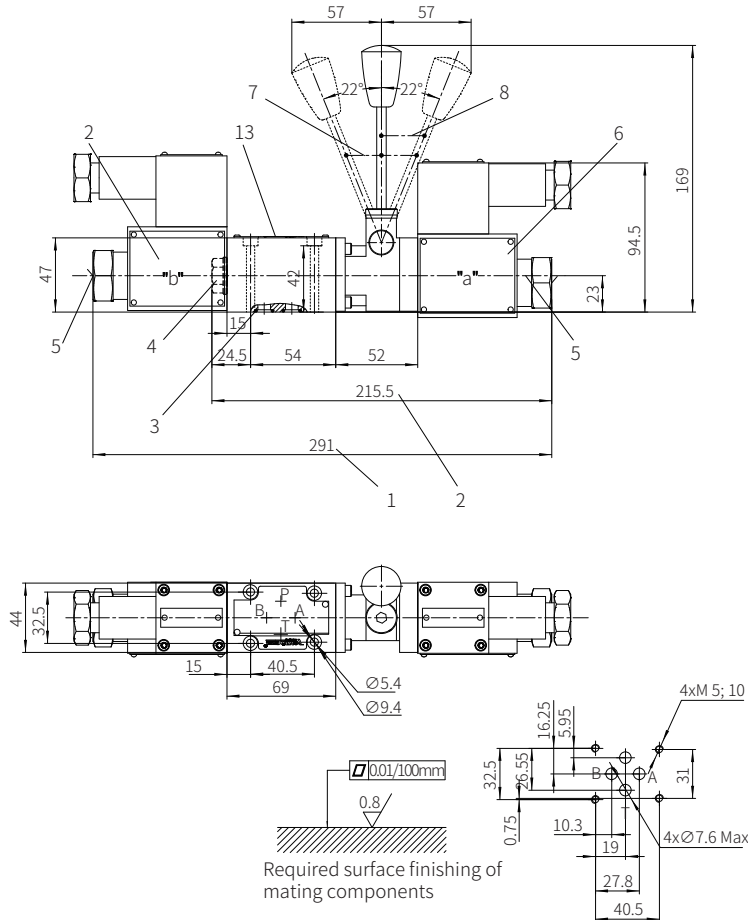
For the characteristic curve and operating limit, please refer to the WE solenoid directional valve.

Functional symbols



Component size

Size unit: mm

Valve with DC solenoid
(Size 6)

- 1 Size of 3-position valve
- 2 Size of 2-position valve
- 3 O ring 9.25x1.78 (for oil ports P, A, B, T)
- 4 Plug for 2-position valve
- 5 Hidden emergency button
- 6 Solenoid
- 7 Switching position for 3-position valve
- 8 Switching position for 2-position valve

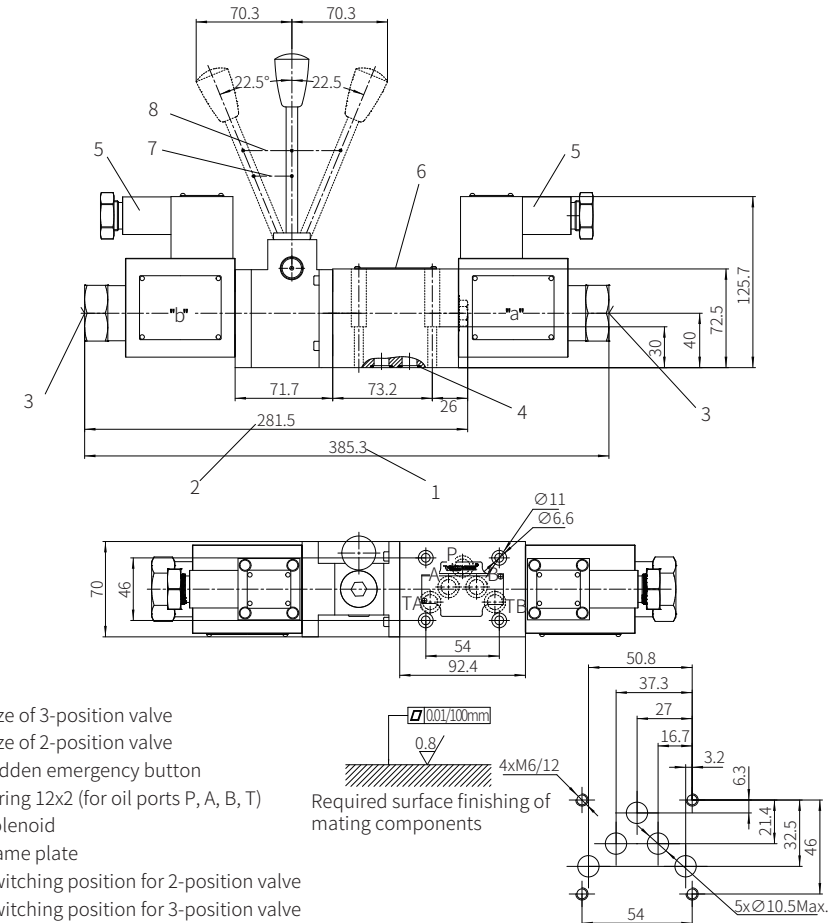
Valve fixing screw
M5x50-10.9 grade GB/T70.1-2000
Tightening torque $M_A=8.9\text{Nm}$

It must be ordered separately
if connection subplate is needed.
Subplate model:
G341/01 (G1/4"); G341/02 (M14x1.5)
G342/01 (G3/8"); G342/02 (M14x1.5)
G502/01 (G1/2"); G502/02 (M22x1.5)

0288

Component size

Size unit: mm

Valve with DC solenoid
(Size 10)

- 1 Size of 3-position valve
- 2 Size of 2-position valve
- 3 Hidden emergency button
- 4 O ring 12x2 (for oil ports P, A, B, T)
- 5 Solenoid
- 6 Name plate
- 7 Switching position for 2-position valve
- 8 Switching position for 3-position valve

It must be ordered separately
if connection subplate is needed.
Subplate model:
G66/01 (G3/8"); G66/02 (M18x1.5)
G67/01 (G1/2"); G67/02 (M22x1.5)
G534/01 (G3/4"); G534/02 (M27x1.5)

Valve fixing screw
M6x40-10.9 grade GB/T70.1-2000
Tightening torque $M_A=15.5\text{Nm}$

0289