

## Piston Type Pressure Switch

Model: HED4...1XJ



◆ Maximum working pressure 350 bar

### Contents

Function description, sectional drawing	02
Models and specifications	02
Functional symbols and terminal connection	03
Technical parameters	03
Characteristic curve	04
Component size	05-06

### Features

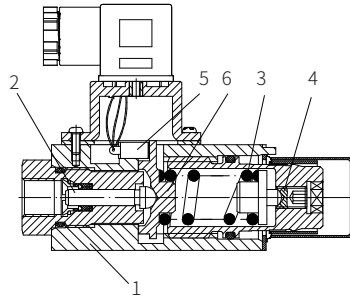
- Piston type, sensitive and reliable action
- Subplate mounting
- Pipe installation

Any part of this brochure can not be reproduced, edited, copied and disseminated electronically in any way without authorization of Jiayite Hydraulics company. As the product is in constant development and innovation, the information in this brochure is not specific to the special conditions or applicability of a specific industry, thus Jiayite Hydraulics company is not responsible for any incomplete or inaccurate description generated.

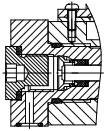


Function description, sectional drawing

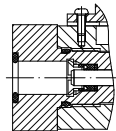
The HED4 type hydraulic-electric pressure switch is a piston pressure switch. It consists of the valve body (1), cartridge with piston (2), spring (3), adjusting element (4) and micro switch (5). The detected pressure acts on the piston (2), then the piston (2) is supported by the spring seat (6) and acts against the continuously adjustable force of the spring (3). The spring seat (6) transfers the movement of the piston (2) to the micro switch (5) to make the circuit switched on or off according to the design requirements.



Model HED40A-1XJ/



Model HED40P-1XJ/

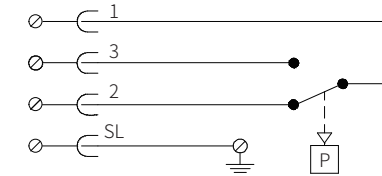
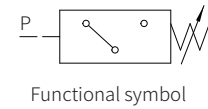


Model HED40H-1XJ/

Models and specifications

HED4	-1X	J	Z14		*
piston type pressure switch					more information in text
subplate mounting	=OP				sealing material
piping installation	=OA				No code= NBR seals
vertical stacking systems	=OH				V= FKM seals
					(consult for other seals)
10 to 19 series	=1X				
(10 to 19 series installation and connection size unchanged)					S= protective cap
Rekith	=J				L24= 24V lamp (25~35V)
maximum adjusting pressure 50bar	=50				L110= 110V lamp (90~130V)
maximum adjusting pressure 100bar	=100				L220= 220V lamp (180~240V)
maximum adjusting pressure 350bar	=350				Z14= small plug

Functional symbols and terminal connection



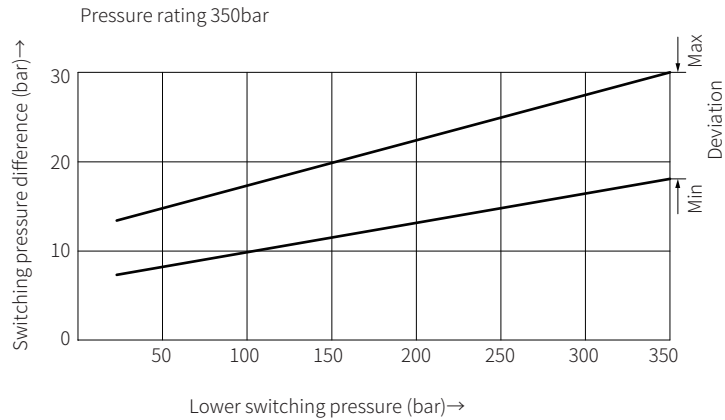
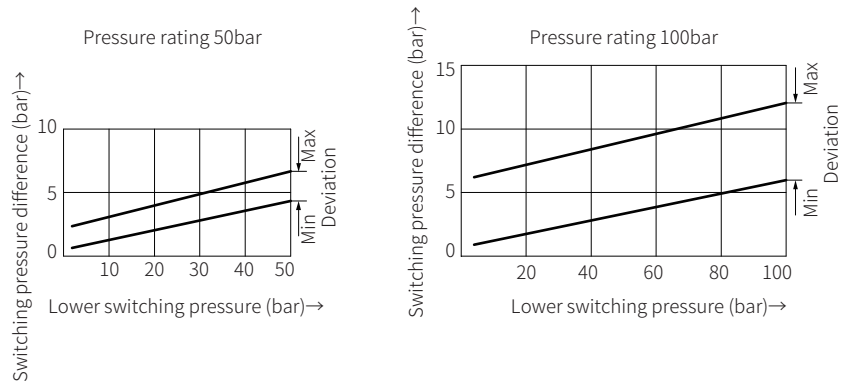
terminal connection -Z14 small plug

Technical parameters

Working medium	Mineral oil - suitable for NBR and FKM seal Phosphate ester - suitable for FKM seal				
Working medium temperature range	°C 20 to +80 (FKM seal) °C 30 to +80 (NBR seal)				
Viscosity range	mm <sup>2</sup> /s	2.8 to 500			
Cleanliness of oil:	The maximum allowable pollution level of oil is NAS16389 and ISO4406 Class 20/18/15				
Switching accuracy (repeatability)	%	<± 1% of setting range			
Allowed switching frequency	times/minute	120			
Electrical connection	Plug-in connector to DIN 43 650 form A, 3... Pin +PE				
Rated pressure (bar)	Maximum setting pressure (bar)	Recover pressure (bar)		Action pressure (bar)	
		min	max	min	max
50	50	2	46	4	50
100	100	3	89	8	100
350	350	6	322	20	350
Maximum connection cross-sectional area	mm <sup>2</sup> /s	1.5			
Valve protection to DIN43650	IP 65				
If DC inductive loading, it need to use a spark suppressor to extend the life.					
Contact load	AC	250V/5A;			
	DC	50V/1A, 250V/0.2A			
Weight	Pressure switch	0.6			
	Stacking plate	0.8 (size 6) 1.9 (size 10)			

### Characteristic curve

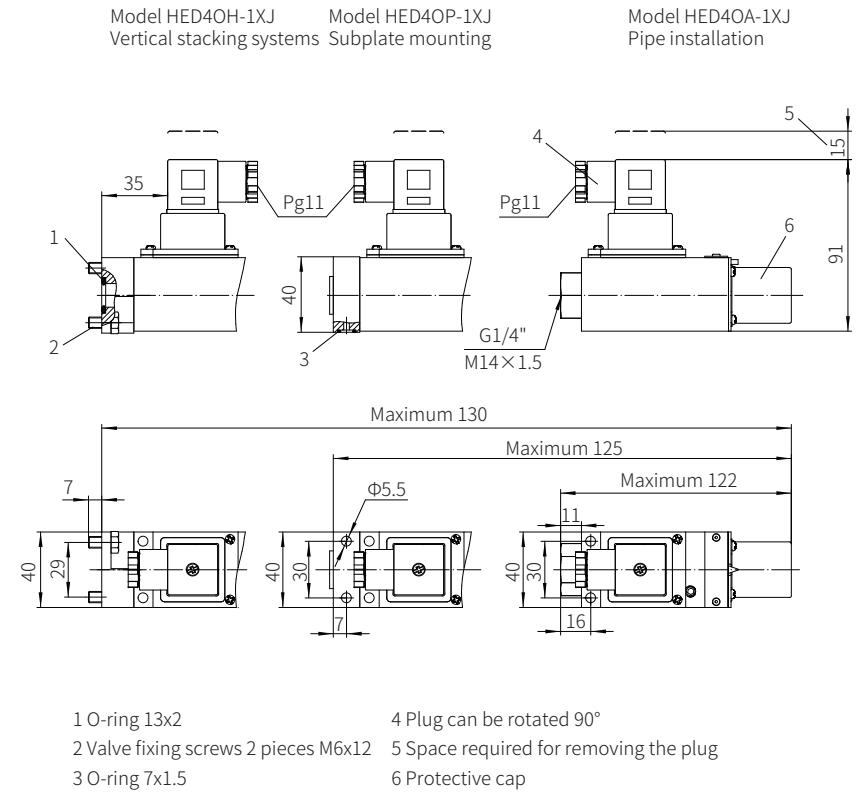
(Measured when using HLP46,  $\vartheta_{oil} = 40^\circ\text{C} \pm 5^\circ\text{C}$ )



### Component size

Size unit: mm

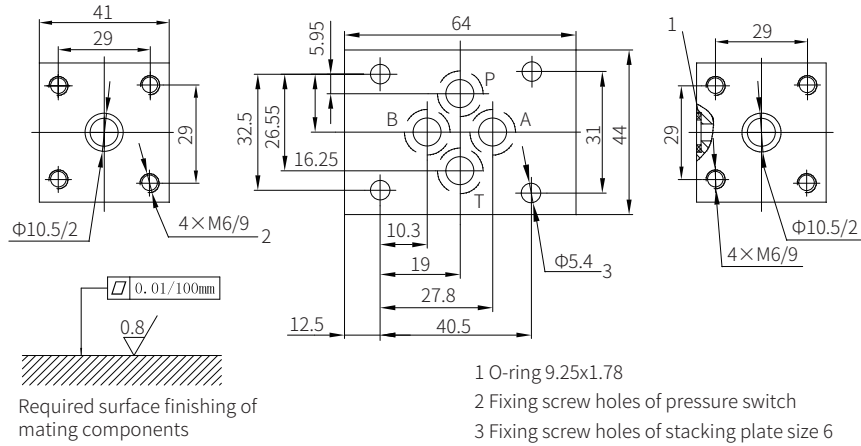
Pressure switch



**Component size**

Size unit: mm

Stacking plate size 6 (for pressure switch HED4...vertical stacking systems)



**Piston Type Pressure Switch**

Model: HED8...1XJ

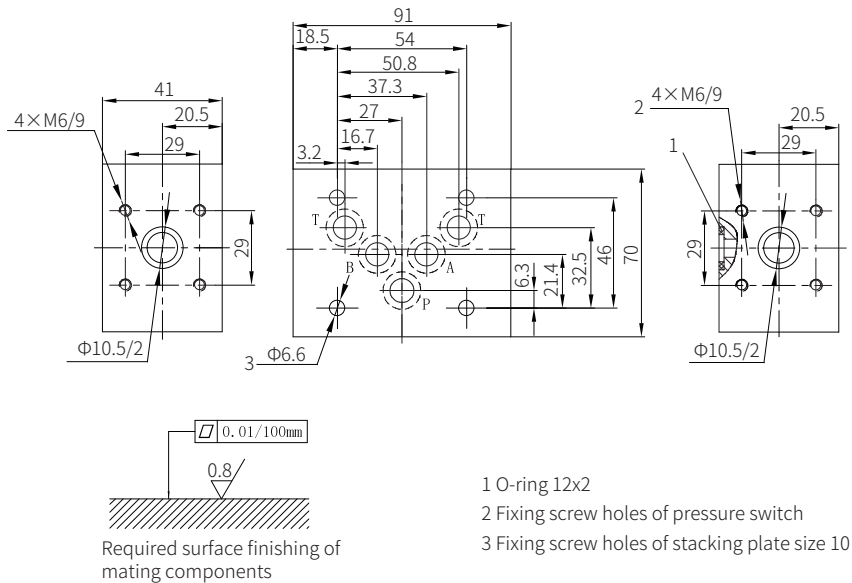


◆ Maximum working pressure 350 bar

**Component size**

Size unit: mm

Stacking plate size 10 (for pressure switch HED4...vertical stacking systems)



**Contents**

Function description, sectional drawing	02
Models and specifications	03
Functional symbols	03
Technical parameters	04
Characteristic curve	05
Component size	06-09
Models and specifications	08-09
Terminal connection	10
Circuit example	10

**Features**

- Subplate mounting
- Pipe installation
- Vertical stacking systems
- Four pressure rating
- Plug with connection (lamp)