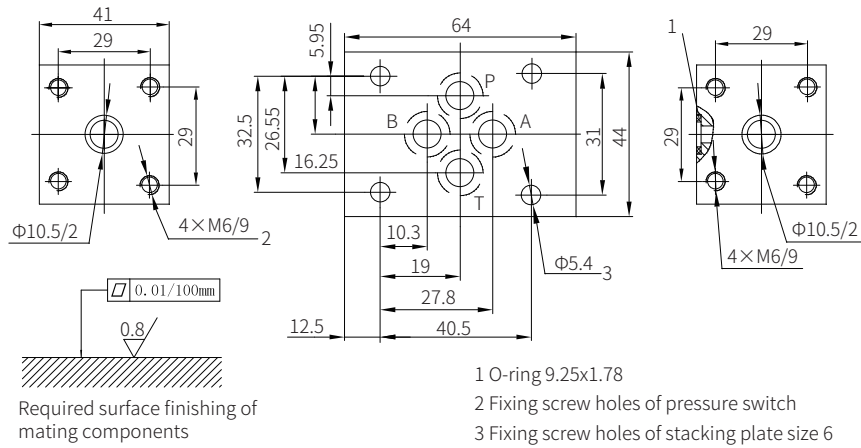


Component size

Size unit: mm

Stacking plate size 6 (for pressure switch HED4...vertical stacking systems)



Piston Type Pressure Switch

Model: HED8...1XJ

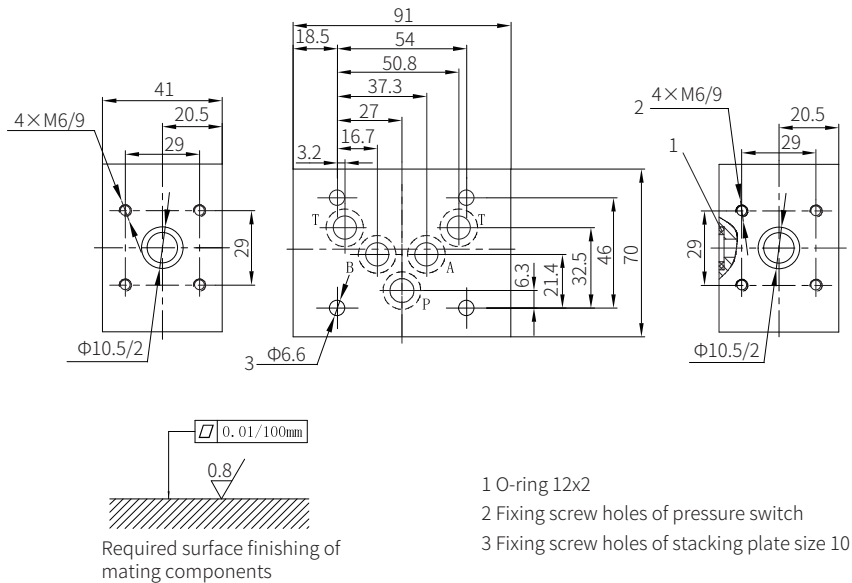


◆ Maximum working pressure 350 bar

Component size

Size unit: mm

Stacking plate size 10 (for pressure switch HED4...vertical stacking systems)



Contents

Function description, sectional drawing	02
Models and specifications	03
Functional symbols	03
Technical parameters	04
Characteristic curve	05
Component size	06-09
Models and specifications	08-09
Terminal connection	10
Circuit example	10

Features

- Subplate mounting
- Pipe installation
- Vertical stacking systems
- Four pressure rating
- Plug with connection (lamp)

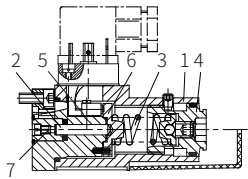
Function description, sectional drawing

The HED8 type hydraulic-electric pressure switch is a piston pressure switch.

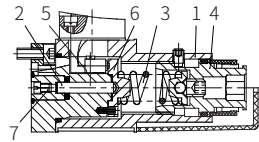
The pressure switch mainly includes the valve body (1), cartridge with spool (2), spring (3), adjusting element (4) and the micro switch (5).

If the monitored pressure is below the set value, the micro switch (5) will start working. The monitored hydraulic oil acts on the spool (2) through the damping hole (7). The spool (2) is supported by the spring seat (6) and acts against the continuously adjustable force of the spring (3). The spring seat (6) transfers the movement of the spool (2) to the micro switch (5) to release the micro switch (5) when the set pressure is reached. In this way, the circuit is switched on or off.

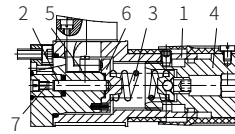
The mechanical structure of the spring seat (6) protects the micro switch (5) from damage when the pressure is reduced suddenly, and also prevents the spring (3) in case of overpressure.



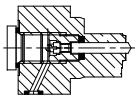
Model HED8OH-1XJ/...K14
Model HED8OH-1XJ/...K14S...



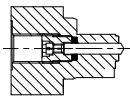
Model HED8OH-1XJ/...K14A...
Model HED8OH-1XJ/...K14AS...



Model HED8OH-1XJ/...K14KW...



Model HED8OP-1XJ/...



Model HED8OA-1XJ/...

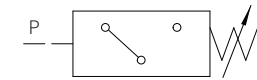
Attention:

In order to extend the working life, the pressure switch should be mounted vibration-proof and protected from hydraulic pressure shocks.

Models and specifications

HED8		1X	J				*
piston type pressure switch							more information in text
vertical stack systems	=OH						sealing material
subplate mounting	=OP						No code= NBR seals
pipe installation	=OA						V= FKM seals (consult for other seals)
10 to 19 series (10 to 19 series installation and connection size unchanged)		=1X					for pipe installation
Rekith			=J				No code= inch thread 2= metric thread
maximum adjusting pressure 50bar						=5	No code= spindle without scale
maximum adjusting pressure 100bar						=10	S= spindle without scale, with protective cap
maximum adjusting pressure 200bar						=20	A= spindle with scale
maximum adjusting pressure 350bar						=35	AS= spindle with scale and protective cap
electrical connection:							KS= lock rotary knob with scale
no plug-in connector, with protective cap						=K14	KW= rotary knob with scale
small plug (lamp)						=Z14	
24V lamp (20~35V)						=L24	
110V lamp (90~130V)						=L110	
220V lamp (180~240V)						=L220	

Functional symbols



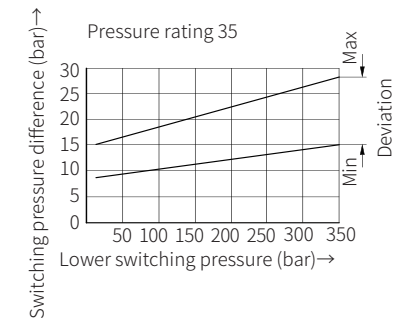
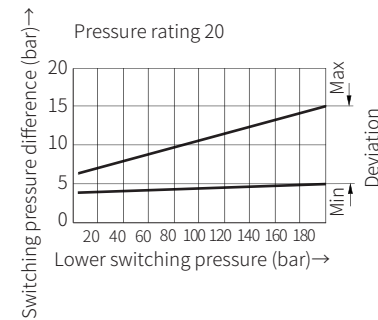
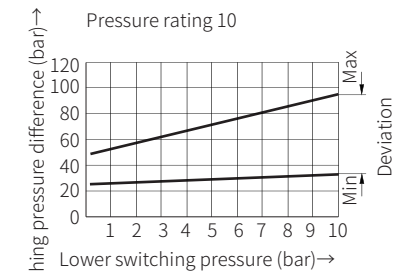
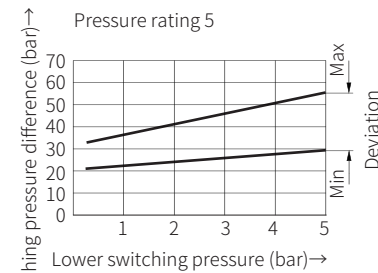
Functional symbol

Technical parameters

Weight	-pressure switch	kg	0.8
	-subplate for vertical stacking systems	kg	0.8 (size 6, plate height 40.5mm)
			3 (size 6, plate height 120mm)
			2 (size 10)
Hydraulic oil			Mineral oil - suitable for NBR and FKM seal Phosphater- suitable for FKM seal
Hydraulic oil temperature range	°C		-30 to +80 (NBR seals) -20 to +80 (FKM seals)
Viscosity range	mm ² /s		2.8 to 500
Cleanliness of oil:			The maximum allowable pollution level of oil is ISO4406 (C) Class 20/18/15
Switching accuracy (repeatability)			< ±1% of setting range
Allowed switching frequency	1/h		4800
Pressure setting range			
Pressure grade (maximum set pressure) bar		Maximum working pressure (bar)	Pressure setting range (bar)
50		350	2-50
100		350	4-100
200		350	5-200
350		500	8-350
Electrical connection		Plug-in connector to DIN 43 650 form A 3... pin +PE	
Maximum connection section area	mm ²	1.5	
Maximum contact load	-AC	250V; 5V	
	-DC	50V/ 1A; 125V/0.03A; 250V/0.02A	
Valve protection to DIN 40 050		IP65	
If DC inductive loading , it need to use a spark suppressor to extend the life			

Characteristic curve

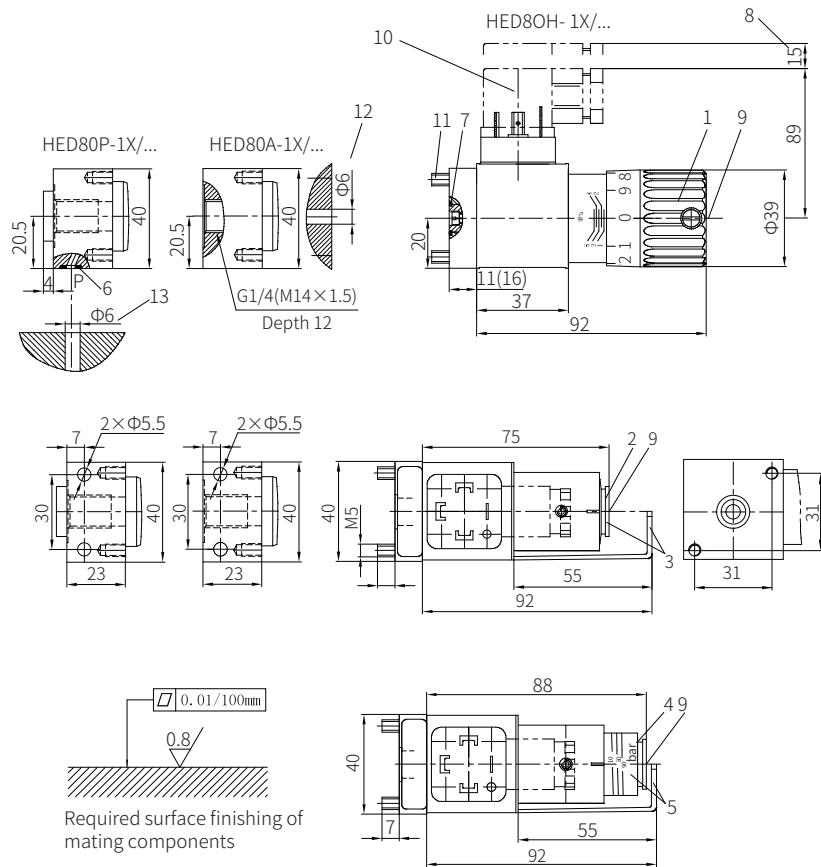
(Measured when using HLP46, $\vartheta_{oil} = 40^\circ\text{C} \pm 5^\circ\text{C}$)



Component size

Size unit: mm

Pressure switch



- 1 Regulating element "kW"
- 2 Regulating element " "
- 3 Regulating element "s"
- 4 Regulating element "A"
- 5 Regulating element "AS"
- 6 O-ring 5.3x1.8
- 7 O-ring 10.82x1.78

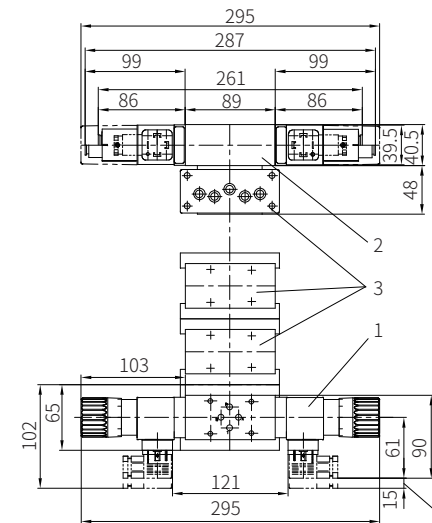
- 10 Plug without cable to DIN 43650
- 11 Valve fixing screws 2ps M5x12 GB/T70.1-10.9
Tightening torque $M_A=8.9\text{Nm}$
- 12 Maximum diameter of mounting surface of mating parts (Model HED80H)
- 13 Maximum diameter of mounting surface of mating parts (Model HED80P)
- Valve fixing (Model HED80P):
2-M5x50 GB/T70.1-10.9
Tightening torque $M_A=7.8\text{Nm}$

Required surface finishing of mating components

Component size

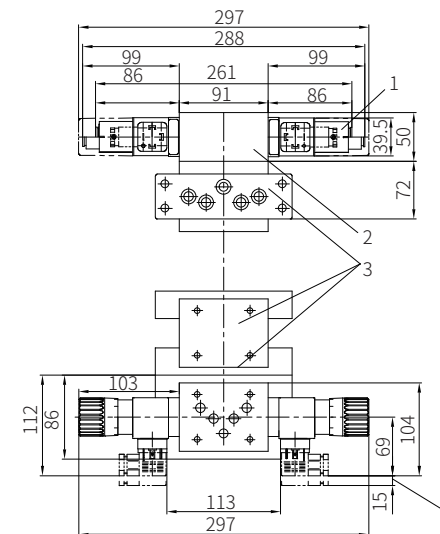
Size unit: mm

Model HED80H... in vertical stacking size 6



- 1 Pressure switch HED80H is used in stacking assemblies (can be installed by $4 \times 90^\circ$). The mounting option of pressure switch depends on the nearest stacking plate.
- 2 Sandwich plate model HSZ06 is used for pressure switch as stacking element
- 3 Stacking elements
- 4 Space required to remove plug

Model HED80H... in vertical stacking size 10

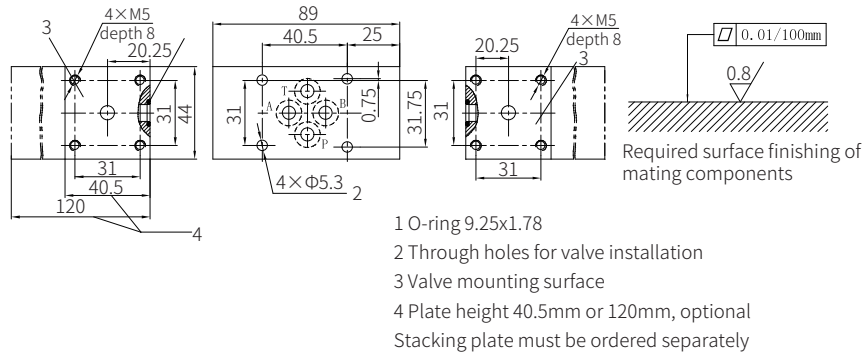


- 1 Pressure switch HED80H is used in stacking assemblies (can be installed by $4 \times 90^\circ$). The mounting option of pressure switch depends on the nearest stacking plate.
- 2 Sandwich plate model HSZ10 is used for pressure switch as stacking element
- 3 Stacking elements
- 4 Space required to remove plug

Component size

Size unit: mm

Model HED8 in sandwich version (350 bar)

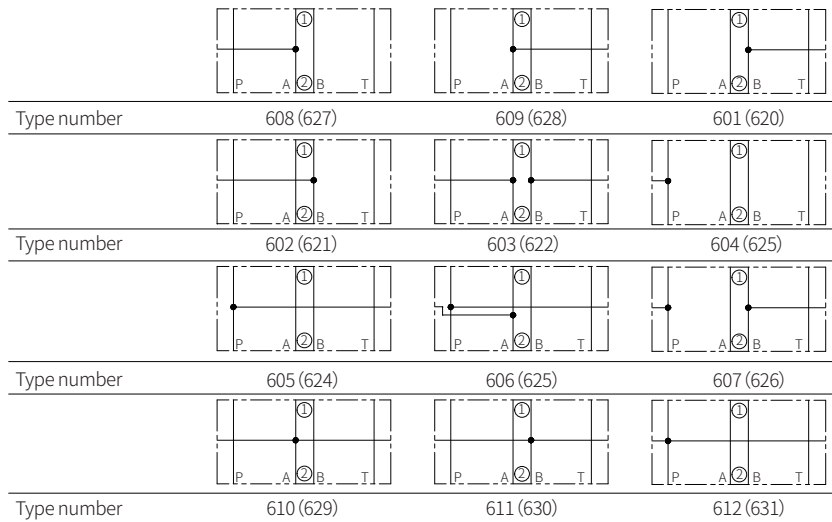


- 1 O-ring 9.25x1.78
 - 2 Through holes for valve installation
 - 3 Valve mounting surface
 - 4 Plate height 40.5mm or 120mm, optional
- Stacking plate must be ordered separately

Models and specifications

Sandwich plate size 6: symbols, type number (type number in () for 120mm plate height)
(①= valve side; ②= subplate side)

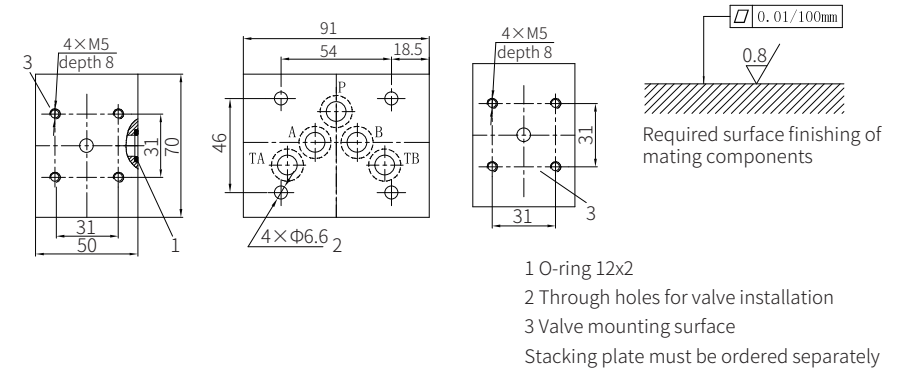
Pressure switch effective in channel...



Component size

Size unit: mm

Model HED8 in sandwich version (350 bar)

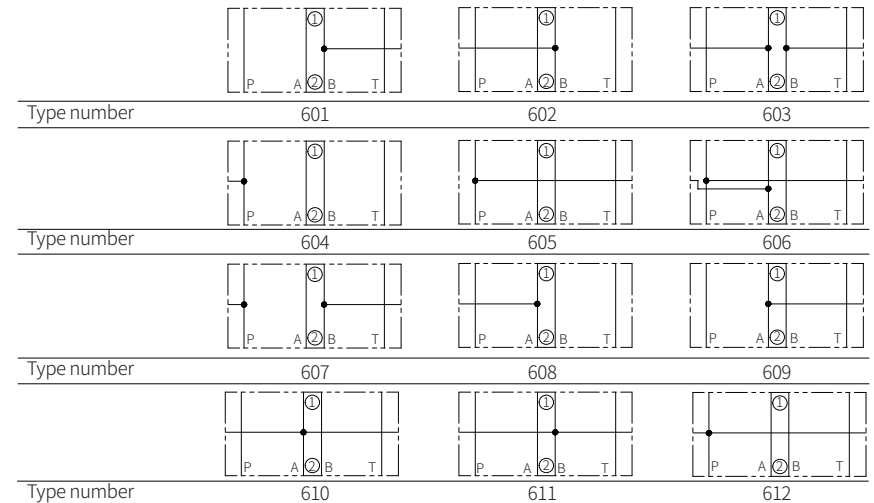


- 1 O-ring 12x2
 - 2 Through holes for valve installation
 - 3 Valve mounting surface
- Stacking plate must be ordered separately

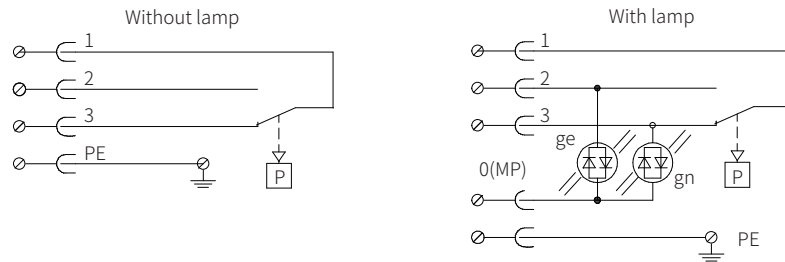
Models and specifications

Sandwich plate size 10: symbols, type number (①= valve side; ②= subplate side)

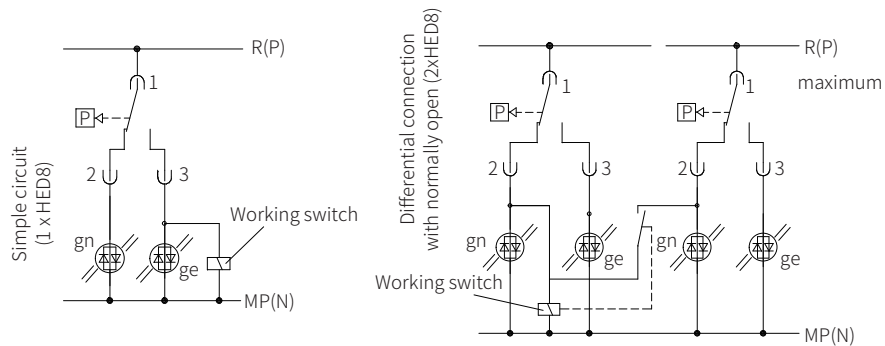
Pressure switch effective in channel...



Terminal connection



Circuit example



8 - Subplate

Contents

	Page
● Model G115, G96 size 5 (ISO4401)	0955
● Model G341, G342, G502 size 6 (ISO4401)	0956
● Model G66, G67, G292, G308, G377, G378 size 10 (ISO4401)	0957
● Model G534, G535, G536, size 10 (ISO4401)	0958
● Model G172 size 16 (ISO4401)	0959
● Model G174 size 16 (ISO4401)	0960
● Model G151, G153 size 25 (ISO4401)	0961
● Model G154, G156 size 25 (ISO4401)	0962
● Model G157 size 32 (ISO4401)	0963
● Model G460, G461 size 10 (ISO5781)	0964
● Model G412, G413 size 25 (ISO5781)	0964
● Model G414, G415 size 32 (ISO5781)	0964
● Model G545, G546 size 10 (ISO6264)	0965
● Model G408, G409 size 25 (ISO6264)	0965
● Model G410, G411 size 32 (ISO6264)	0965
● Model G467, G468 size 10 (ISO6264)	0966
● Model G469, G470 size 25 (ISO6264)	0966
● Model G471, G472 size 32 (ISO6264)	0966
● Model G51, G565 subplate G51/G565	0967
● Model G279, G280 size 10 (ISO6263)	0968
● Model G281, G282 size 16 (ISO6263)	0968