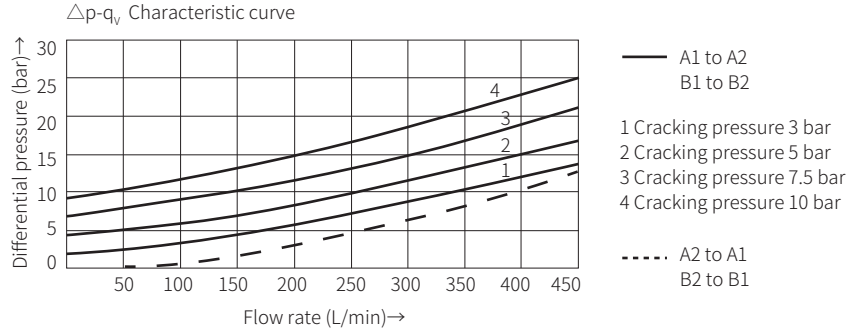


Characteristic curve

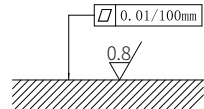
(Measured when using HLP46, $\vartheta_{oil} = 40^\circ\text{C} \pm 5^\circ\text{C}$)



Component size

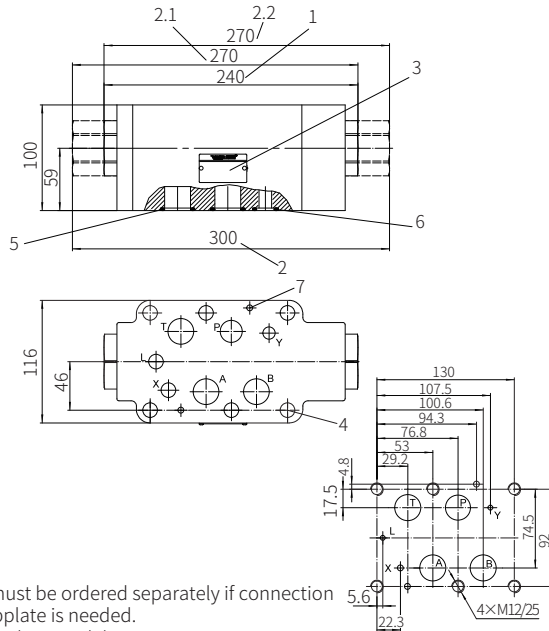
Size unit: mm

Model Z2S22...5XJ/...



Required surface finishing of mating components

- 1 Check valve in port A, B when cracking pressure is 3 or 5 bar
- 2 Check valve in port A, B when cracking pressure is 7.5 or 10bar
- 2.1 Check valve in port A when cracking pressure is 7.5 or 10bar
- 2.2 Check valve in port B when cracking pressure is 7.5 or 10bar
- 3 Name plate
- 4 Mounting holes
- 5 O-ring 27X3 (for oil port A, B, P, T)
- 6 O-ring 19X3 (for oil port X, Y, L)
- 7 Valve fixing screw mounting holes M12-10.9 grade GB/T70.1-2000



It must be ordered separately if connection subplate is needed.
Subplate model:

- Tightening torque $M_A = 95\text{Nm}$
- Need to order separately
- G153/01 (G1") ; G153/02 (M33x2)
- G154/01 (G1-1/4") ; G154/02 (M42x2)
- G156/01 (G1-1/2") ; G156/02 (M48x2)

Hydraulic-operated Check Valve
Model: SV/SL6...6XJ



- ◆ Size 6
- ◆ Maximum working pressure 315 bar
- ◆ Maximum working flow 60 L/min

Contents

Function description, sectional drawing	02
Models and specifications	03
Functional symbols	03
Technical parameters	04
Characteristic curve	04
Component size	05

Features

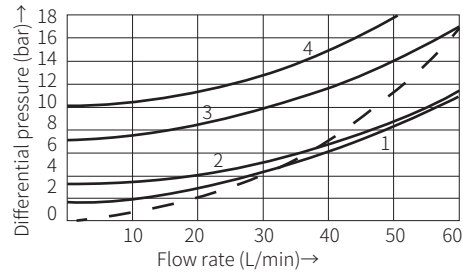
- Hydraulic-operated check valve
- Connection dimensions according to DIN 4401-03-02-0-05
- Subplate mounting
- With or without drain port as required
- With or without pre-opening port as required
- Various opening pressures

Technical Parameters

Weight	kg	About 0.8	
Installation location		Optional	
Flow direction		Free flow from A to B, flow from B to A under hydraulic operation	
Environment temperature range	°C	-30 to +80 (NBR seal) -20 to +80 (FKM seal)	
Maximum working pressure	bar	315	
Maximum flow	L/min	60	
Pilot pressure	bar	5 to 315	
Viscosity range	mm ² /s	2.8 to 500	
The maximum allowable pollution level of hydraulic oil - cleanliness class 20/18/15 to ISO 4406			
Pilot flow	Oil port X	cm ³	0.68
	Oil port Y (model SL only)	cm ³	0.58
Control area ratio	Model "A"		A3/A2:1/13
			A1/A2:1/3
	Model "B"		A4/A2:1/7

Characteristic curve

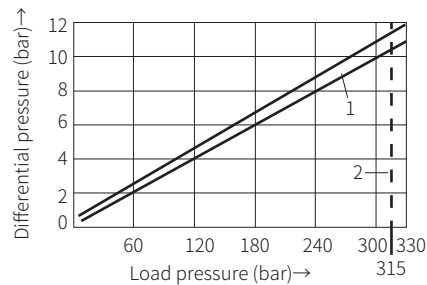
(Measured when using HLP46, $\vartheta_{oil} = 40^{\circ}\text{C} \pm 5^{\circ}\text{C}$)



— A to B

- 1 Cracking pressure 1.5 bar
- 2 Cracking pressure 3 bar
- 3 Cracking pressure 7 bar
- 4 Cracking pressure 10 bar

----- B to A

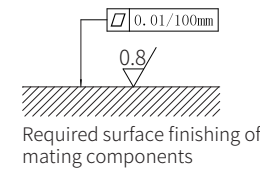
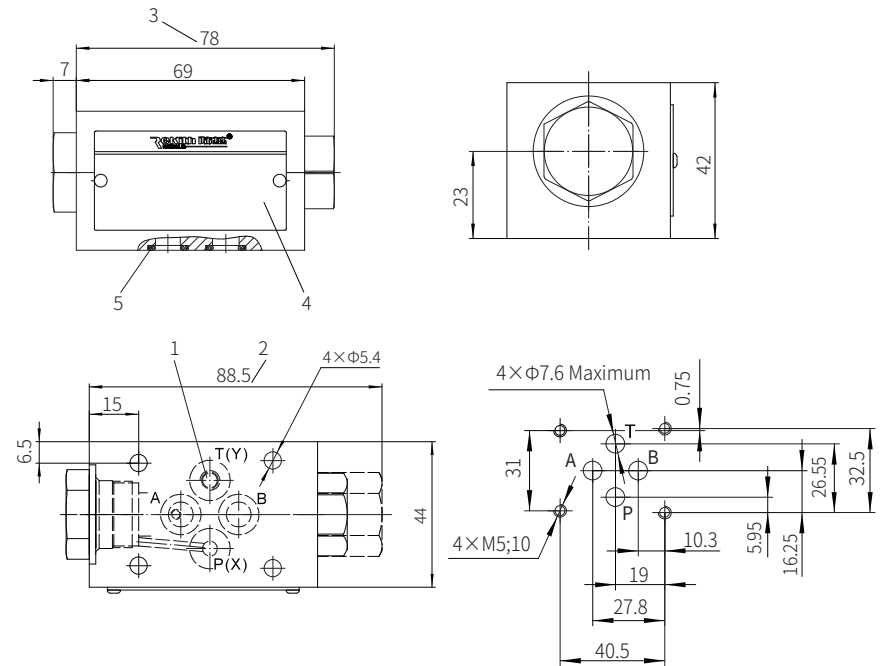


- 1 Tolerance zone
- 2 Limit value

Component size

Size unit: mm

Model SV/SL6...6XJ/...



- 1 Port Y (M6; closed for model SV)
- 2 Size of model SV/SL6PA
- 3 Size of model SV/SL6PB
- 4 Name plate
- 5 O-ring 9.25X1.78

It must be ordered separately if connection subplate is needed.

Subplate model:

- G341/01 (G1/4"); G341/02 (M14×1.5)
- G342/01 (G3/8"); G342/02 (M18×1.5)
- G502/01 (G1/2"); G502/02 (M22×1.5)

- Valve fixing screw
M5x50-10.9 grade GB/T70.1-2000
- Tightening torque $M_A = 7.8\text{Nm}$