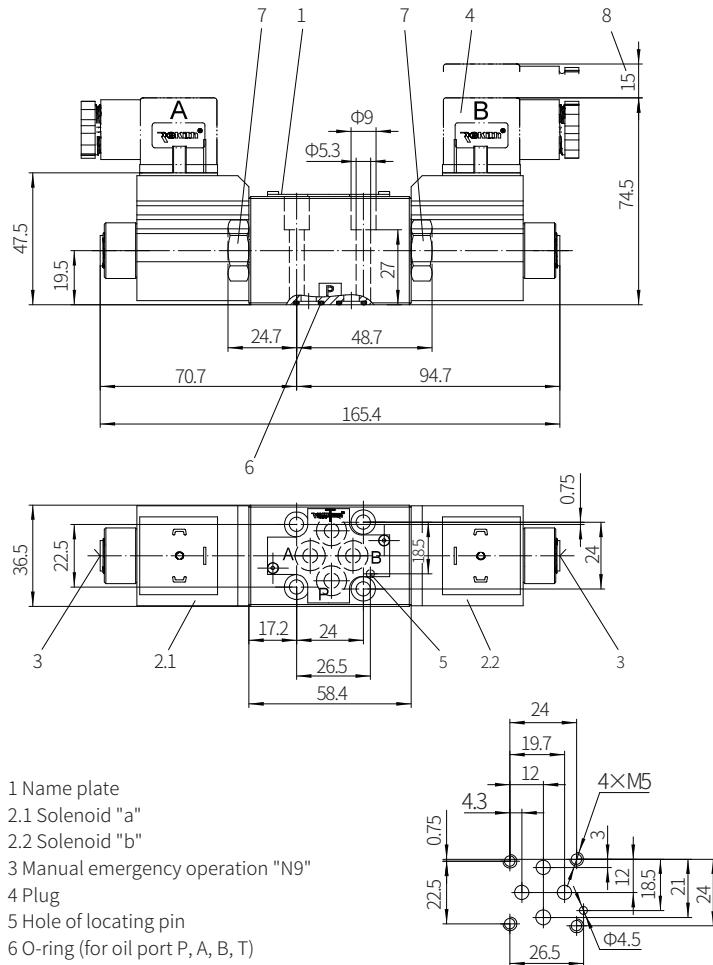


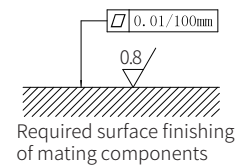
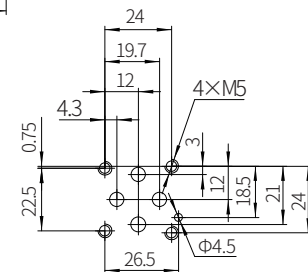
Component size

Size unit: mm

Model 4WE4...2XJ/...



- 1 Name plate
 - 2.1 Solenoid "a"
 - 2.2 Solenoid "b"
 - 3 Manual emergency operation "N9"
 - 4 Plug
 - 5 Hole of locating pin
 - 6 O-ring (for oil port P, A, B, T)
 - 7 Plug for valve with one solenoid
 - 8 Space required to remove the plug
- Valve fixing screw
M5x35-10.9 grade GB/ T70.1-2000
Tightening torque $M_A=6Nm$



Solenoid Operated Directional Valve

Model: WE5...6XJ



- ◆ Size 5
- ◆ Maximum working pressure 250 bar
- ◆ Maximum working flow 14 L/min

Contents

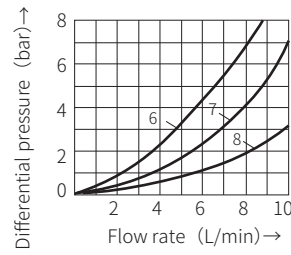
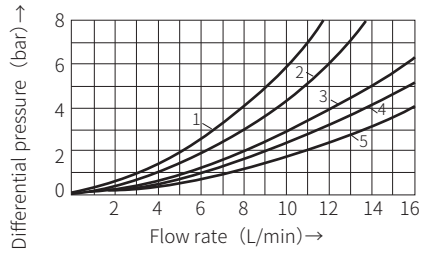
Function description, sectional drawing	02
Models and specifications	02
Functional symbols	03
Technical parameters	03
Characteristic curve	04
Characteristic limit	04
Component size	05

Features

- Direct solenoid operated directional spool valve
- Wet pin DC or AC solenoids
- Plate connection

Characteristic curve

(Measured when using HLP46, $v_{oil} = 40^\circ C \pm 5^\circ C$)



- 1 Symbol B: P→B, P→A
- 2 Symbol B: P→A, P→B
- 3 All symbols except B: A→T
- 4 All symbols except B: B→T
- 5 All symbols except B: P→A, P→B, A→T
- 6 Symbol G: P→A, B→T
- 7 Symbol G: P→T, P→B
- 8 Symbol G: A→T

Characteristic limit

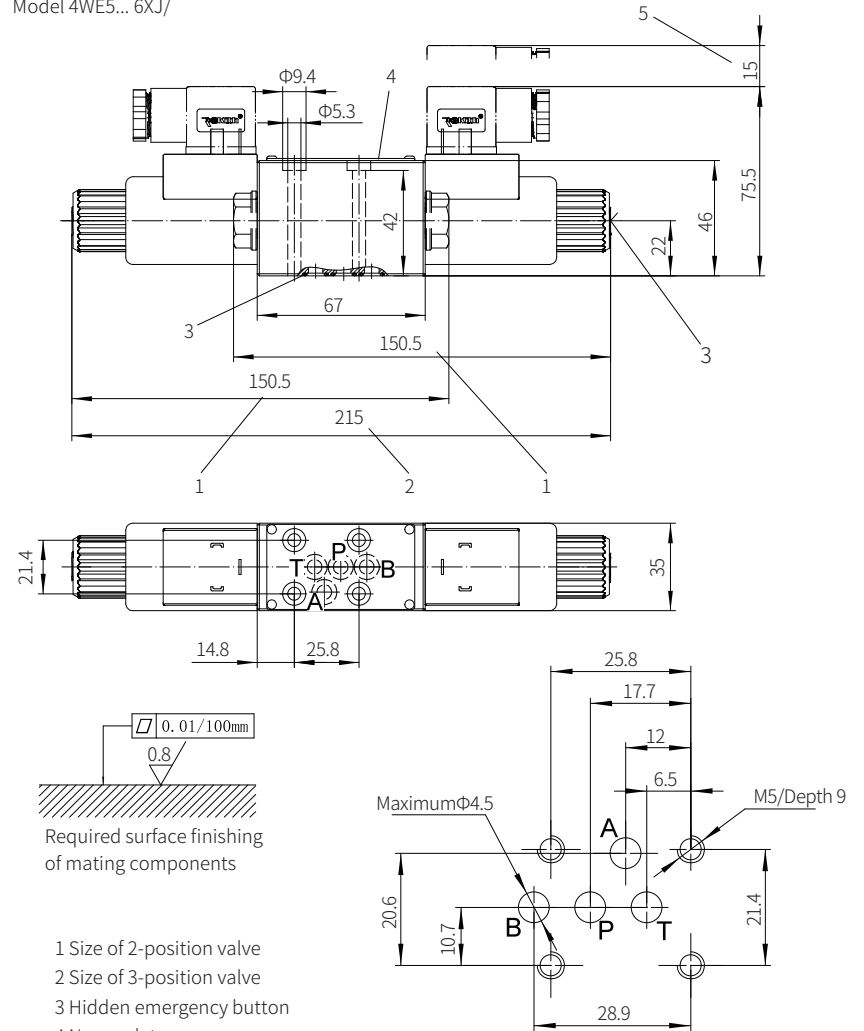
The switching characteristics of the valve are related to the adhesion effect of the filter. To achieve the recommended flow value, it is recommended to use a 20um filter in the system. Due to the hydraulic force acting inside the valve affects the flow capacity of the valve. Therefore, different spool valve symbols have different power limits. In the case of only one channel, e.g. when the four-way valve with chamber A or B blocked is used as three-way valve, the power limit difference is significant.

Symbols	Working pressure (bar)		
	50	100	250
A, B, C, N, E, F, H, J, L, M, Q, R, V, W	14	14	12
G	10	10	9

Component size

Size unit: mm

Model 4WE5... 6XJ/



- 1 Size of 2-position valve
- 2 Size of 3-position valve
- 3 Hidden emergency button
- 4 Name plate
- 5 Space required to remove the plug
- 6 O-ring 7x1.5 (for port P, A, B, T)
- Valve fixing screw
M5x50-10.9 grade to GB/T70.1-2000
Tightening torque $M_A = 7.8Nm$

It must be ordered separately if connection subplate is needed.
Subplate model:
G115/01 (G1/4"); G115/02 (M14x1.5)