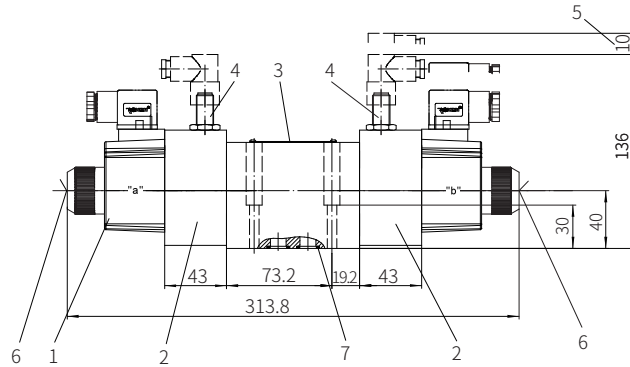


Component size

Size unit: mm

Model 4WE10.../26... 3-position valve with AC solenoid

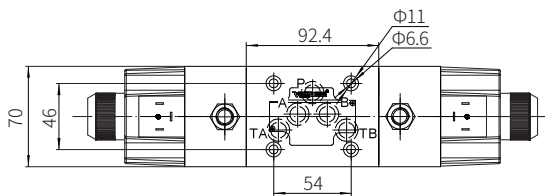


- 1 Solenoid
 2 Transition cover
 3 Name plate
 4 High voltage proximity switch
 5 Space required to remove the connector
 6 Hidden manual emergency operation
 7 O ring 10X2 (for oil ports P, A, B and T)
 8 Plug for 2-position valve

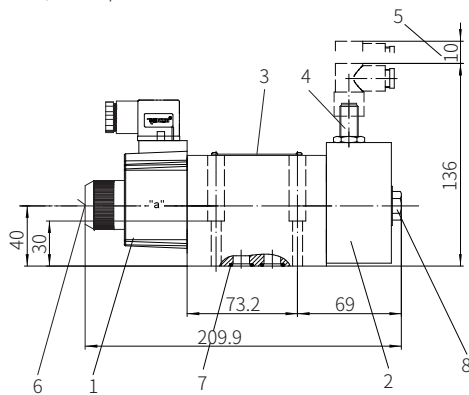
Valve fixing screw
 M6x40-10.9 grade GB/T70.1-2000
 Tightening torque $M_A=13.7\text{Nm}$

It must be ordered separately
 if connection subplate is needed.

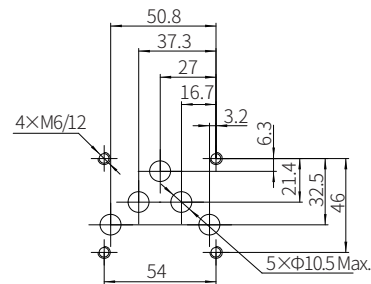
Subplate model:
 G66/01(G3/8"); G66/02(M18x1.5)
 G67/01(G1/2"); G67/02(M22x1.5)
 G534/01 (G3/4"); G534/02(M27x2)



4WE10.../26... 2-position valve with AC solenoid



$\sqrt{0.01/100\text{mm}}$
 0.8
 Required surface finishing of
 mating components



Isolating valve

Model: Z4WE6...3XJ



- ◆ Size 6
- ◆ Maximum working pressure 315 bar
- ◆ Maximum working flow 40 L/min

Contents

Function description, sectional drawing	02
Models and specifications	02
Functional symbols	03
Technical parameters	03
Electrical parameters	03
Characteristic curve	04
Characteristic limit	04
Component size	05-06

Features

- Directional valve operated by solenoid
- Control the opening and closing of the oil
- The manual emergency operation controls the movement of the control spool when solenoid de-energized

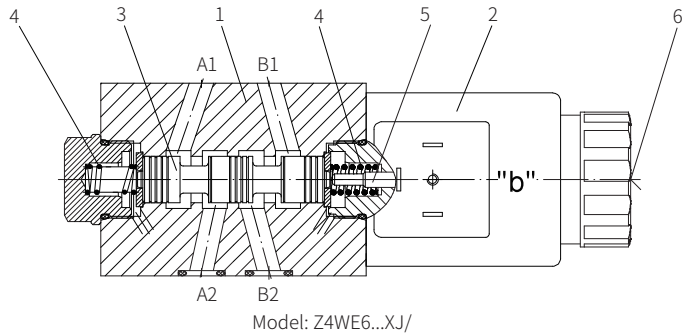
Function description, sectional drawing

The Z4WE6 isolating valve is solenoid operated directional spool valve. It controls the opening and closing of the oil.

The valve is composed of valve body (1), one or two solenoids (2), control spool (3) and 2 reset springs (4). In the de-energized condition, the control spool(3) is held in the neutral or initial position by reset spring (4), the control spool (3) is controlled by wet-pin solenoid (2). To ensure proper function, the pressure chamber of the solenoid must be filled with oil.

The force of the solenoid (2) via push rod (5) acts on control spool (3) and pushes it from the stationary position to the required position. Then port A1, A2, B1 and B2 can be either connected or disconnected. The port P and T always flow freely.

When the solenoid (2) is de-energised, the control spool (3) is returned to the neutral position via reset spring (4). The manual emergency operation controls the movement of the control spool when solenoid de-energized.



Models and specifications

Z4WE 6 - 3X J C

isolating valve

size 6 =6

symbols e.g.: D24, E63... =3X (30 to 39 series (30 to 39 series installation and connection size unchanged))

Rekith =J

wet-pin solenoid =C

Note: If AC voltage used, it is recommended to use the rectified AC voltage

more information in text

sealing material
No code= NBR seals
V= FKM seals
(consult for other seals)

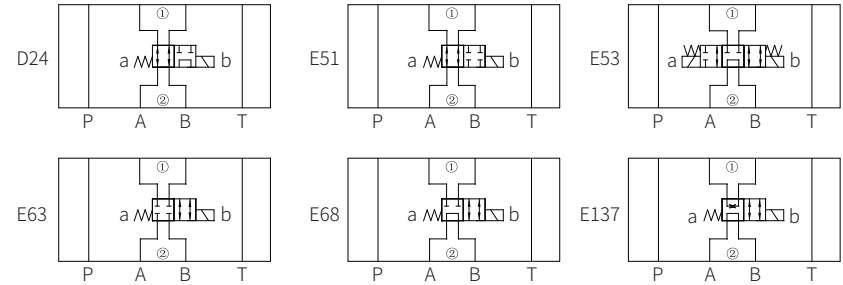
Z4= standard plug (not for rectified type)
Z5L= large right angle lamp plug

N9= with hidden manual emergency operation

G24= 24V DC
W220R= 220VAC with rectifier
W110R= 110VAC with rectifier
other voltages see technical parameters

Functional symbols

(①= Valve side, ②= Subplate side)



Technical parameters

Installation position	Optional	
Environment temperature range °C	-30 to + 50 (NBR seal) -20 to + 50 (FKM seal)	
Weight	Valve with one solenoid kg	1.5
	Valve with two solenoids kg	2.0
Maximum working pressure	Oil port A, B, P bar	315
	Oil port T bar	210 (DC) , 160 (AC)
Maximum flow	L/min	40
Working medium	Mineral oil - for NBR seals or FKM seals	
	Phosphonolipid - for FKM seals	
Working medium temperature range °C	-30 to + 80 (NBR seal)	
	-20 to + 80 (FKM seal)	
Viscosity range	mm ² /s	2.8 to 500
Cleanliness of oil	The maximum allowable pollution level of oil is ISO4406 Class 20 / 18 / 15	

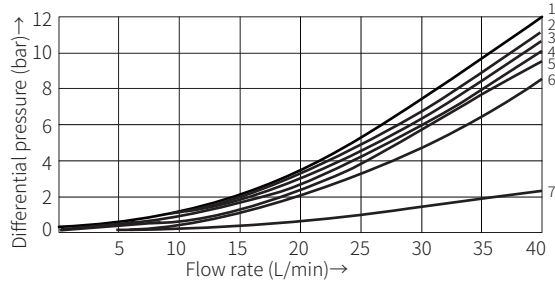
Electrical parameters

Voltage type	DC		AC 50/60Hz
	Voltage available	V	12, 24, 96, 110, 205, 220
Allowable voltage tolerance	%	+10 to -15	
Power consumption(DC)	W	30	-
Holding power(AC)	VA	-	50
Impact power(AC)	VA	-	220
Power rate	continuous		
Switching time to	on	ms	20 to 45
	off	ms	10 to 25
Switching frequency	times/h	to 15000	
Protection grade to DIN 40050	IP 65		

Note:

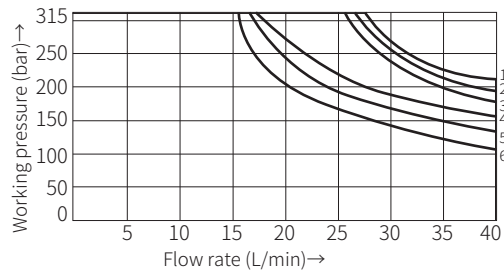
When electrical connection, the protective conductor (PE) must be connected properly as rules.

Characteristic curve



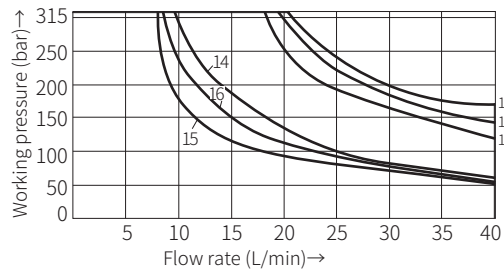
	A2 to A1	A1 to A2	B2 to B1	B1 to B2	A2 to B2	B2 to A2	T2 to T2	P2 to P1
D24	4	1	2	4	3	2	7	7
E51	3	1	1	3	-	-	7	7
E53	2	2	2	2	5	2	7	7
E63	2	5	5	3	-	-	7	7
E68	4	4	6	5	4	5	7	7
E137	1	4	3	2	5	6	7	7

Characteristic limit



- 1 E63 1 E51
- 2 E68 2 E137
- 3 E53 3 D24

(Measured when using HLP46,
 $\vartheta_{oil}=40^{\circ}\text{C} \pm 5^{\circ}\text{C}$ and 24VDC)



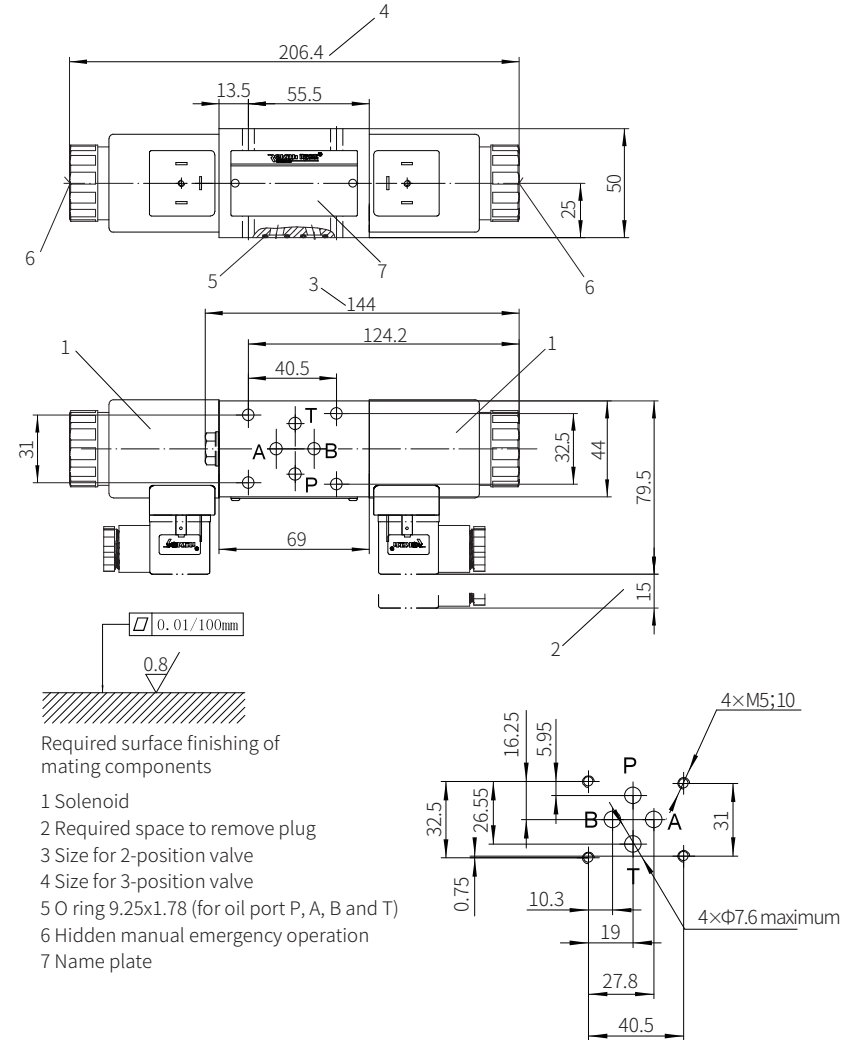
	W230-50Hz	W230-60Hz
E63	11	14
E68	12	16
E53	13	16
E137	15	15
E51	15	15
D24	15	15

(Measured when using HLP46,
 $\vartheta_{oil}=40^{\circ}\text{C} \pm 5^{\circ}\text{C}$ and 230VAC)

Component size

Size unit: mm

Valve with DC or AC rectified solenoid



Required surface finishing of mating components

- 1 Solenoid
- 2 Required space to remove plug
- 3 Size for 2-position valve
- 4 Size for 3-position valve
- 5 O ring 9.25x1.78 (for oil port P, A, B and T)
- 6 Hidden manual emergency operation
- 7 Name plate

It must be ordered separately if connection subplate is needed.
Subplate model:

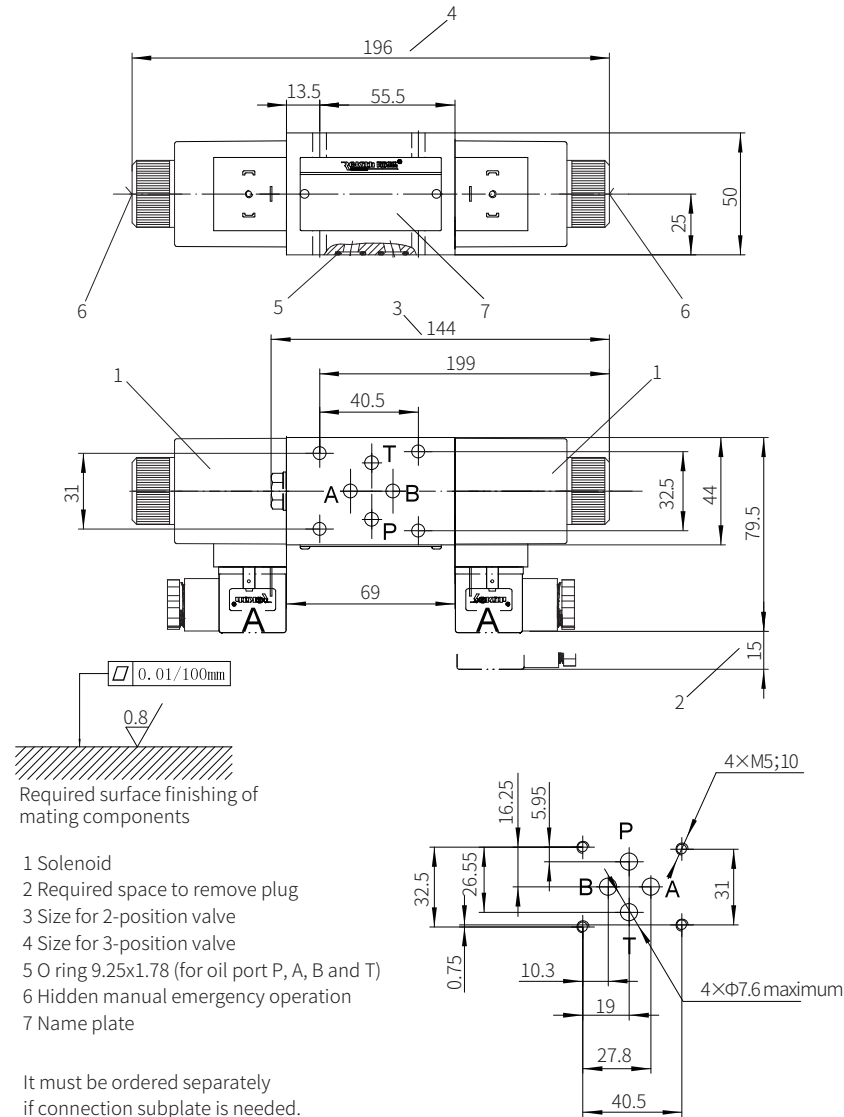
- G341/01(G1/4"); G341/02(M14x1.5)
- G342/01(G3/8"); G342/02(M18x1.5)
- G502/01(G1/2"); G502/02(M22x1.5)

Valve fixing screw
M5-10.9 grade GB/T70.1-2000
Tightening torque $M_A=7.8\text{Nm}$

Component size

Size unit: mm

Valve with AC solenoid



Required surface finishing of mating components

- 1 Solenoid
- 2 Required space to remove plug
- 3 Size for 2-position valve
- 4 Size for 3-position valve
- 5 O ring 9.25x1.78 (for oil port P, A, B and T)
- 6 Hidden manual emergency operation
- 7 Name plate

It must be ordered separately if connection subplate is needed.
Subplate model:

G341/01(G1/4"); G341/02(M14x1.5)
G342/01(G3/8"); G342/02(M18x1.5)
G502/01(G1/2"); G502/02(M22x1.5)

Valve fixing screw
M5-10.9 grade GB/T70.1-2000
Tightening torque $M_A=7.8\text{Nm}$

Hydraulic and Pneumatic Directional Valve

Model: WH/WP6...XJ



- ◆ Size 6
- ◆ Maximum working pressure 315 bar
- ◆ Maximum flow rate 60 L/min

Contents

Functional description, sectional drawing	02
Models and specifications	02
Functional symbols	03
Technical Parameters	04
Characteristic curve	04
Characteristic limit	05
Component size	06-07

Features

- Direct operated directional spool valve
- Operating types:
Pneumatic (WP)
Hydraulic (WH)
- Subplate mounting
- Porting pattern to DIN 24340 form A and ISO4401