

Modular Pressure Reducing Valve

Model: ZDR6D...4XJ



- ◆ Size 6
- ◆ Maximum working pressure 210 bar
- ◆ Maximum working flow 50 L/min

Contents

Function description, sectional drawing	02
Models and specifications	03
Functional symbols	03
Technical parameters	04
Characteristic curve	05
Component size	06

Features

- Sandwich plate valve
- 2 kinds of pressure ranges
- 2 kinds of adjusting elements:
 - Rotary knob
 - Hexagon screw with sleeve and protective cap
- Pressure reducing in port A, B or P
- Check valve, optional

Any part of this brochure can not be reproduced, edited, copied and disseminated electronically in any way without authorization of Jiayite Hydraulics company. As the product is in constant development and innovation, the information in this brochure is not specific to the special conditions or applicability of a specific industry, thus Jiayite Hydraulics company is not responsible for any incomplete or inaccurate description generated.



Technical parameters

Installation position	optional	
Environment temperature range	-30 to +80(NBR seal) -20 to +80 (FKM seal)	
Weight	kg	1.2KG
Hydraulic		
Maximum working pressure	bar	315
Maximum secondary pressure	bar	25; 75; 150; 210
Back pressure port T(Y)	bar	160
maximum flow	L/min	50
Pressure medium	Mineral oil (HL, HLP) ¹⁾ in accordance with DIN 51524; Fast living organisms degraded oil according to VDMA 24568; HETG (Rapeseed oil) ¹⁾ ; HEPG(Polyethyleneglycol) ²⁾ ; HEES (Synthetic Fats) ²⁾	
Pressure medium temperature range	°C	-30 to +80(NBR seal) -20 to +80 (FKM seal)
Viscosity range	mm ² /s	10 to 800
Cleanliness of oil ³⁾	The maximum allowable pollution level of oil is ISO4406 Class 20/18/15	

1) For NBR seal and FKM seal.

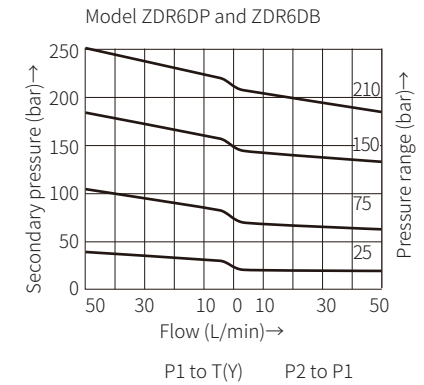
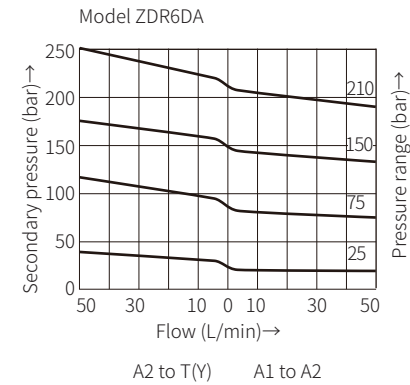
2) Only for FKM seal.

3) The oil must meet the cleanliness degree requested by the components in the hydraulic system.

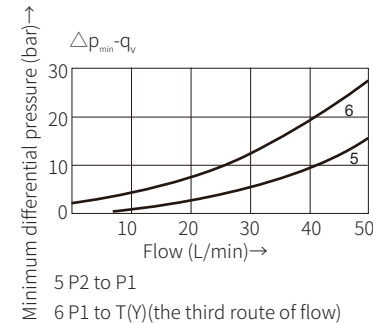
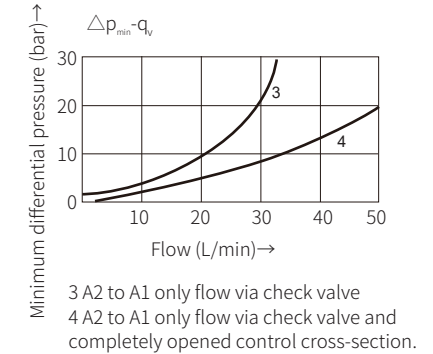
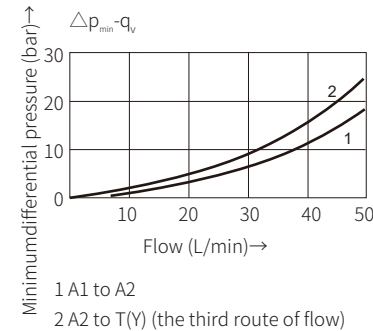
Effective oil filtration can prevent failure and increase the service life of the components.

Characteristic curve

(Measured when using HLP46, $\vartheta_{oil}=40^{\circ}\text{C} \pm 5^{\circ}\text{C}$)



Note: When the set pressure is low, the characteristic curve remains within the corresponding pressure level range.

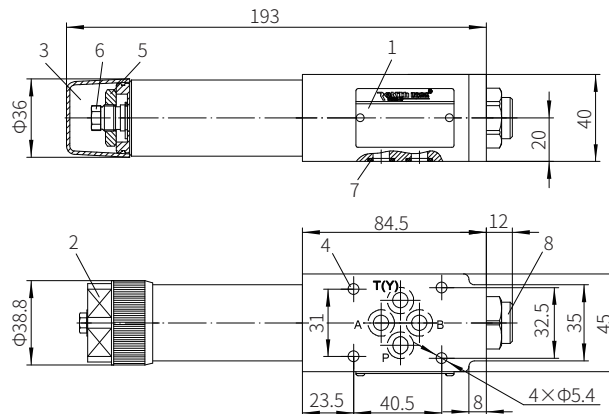


The characteristic curves apply to the pressure at the valve output pressure = 0 bar across the entire flow range.

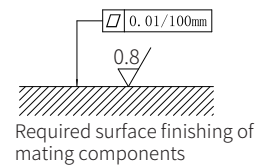
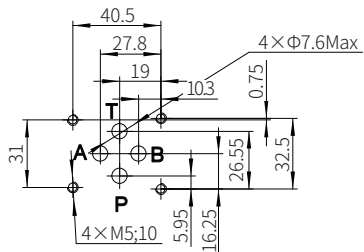
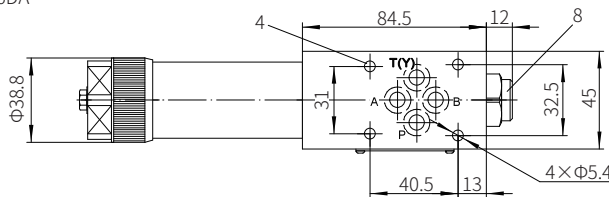
Component size

Size unit: mm

Model ZDR6DP and ZDR6DB



Model ZDR6DA



- 1 Name plate
- 2 Adjustment unit "1"
- 3 Adjustment unit "2"
- 4 Valve fixing hole
- 5 Locknut S=24
- 6 Internal hexagon adjusting screw S=10
- 7 O ring 9.25X1.78(for port P, A, B, T)
- 8 Pressure gauge connection: G1/4 or M14x1.5, 12 deep

- Valve fixing screw
M5-10.9 grade GB/T70.1-2000
Tightening torque $M_A=7.8\text{Nm}$
- It must be ordered separately if connection subplate is needed
Subplate model:
G341/01 (G1/4"); G341/02(M14x1.5)
G342/01 (G3/8"); G342/02(M18x1.5)
G502/01 (G1/2"); G502/02(M22x1.5)

Modular Pressure Reducing Valve

Model: ZDR10D...5XJ



- ◆ Size 10
- ◆ Maximum working pressure 210 bar
- ◆ Maximum working flow 80 L/min

Contents

Function description, sectional drawing	02
Models and specifications	03
Functional symbols	03
Technical parameters	04
Characteristic curve	04
Component size	05

Features

- Sandwich plate valve
- 2 kinds of adjusting elements:
Rotary knob
Hexagon screw with sleeve and protective cap
- Pressure reducing in port A, B or P
- Check valve, optional
- 4 pressure ratings