

Modular Pressure Sequence Valve

Model: ZDZ6DP-1XJ



- ◆ Size 6
- ◆ Maximum working pressure 250bar
- ◆ Maximum flow rate 60L/min

Contents

Function description, sectional drawing	02
Models and specifications	02
Technical parameters	03
Component size	04

Features

- Sandwich plate type
- Mounting surface according to DIN24340 A and ISO4401
- With pressure gauge connection

Any part of this brochure can not be reproduced, edited, copied and disseminated electronically in any way without authorization of Jiayite Hydraulics company. As the product is in constant development and innovation, the information in this brochure is not specific to the special conditions or applicability of a specific industry, thus Jiayite Hydraulics company is not responsible for any incomplete or inaccurate description generated.

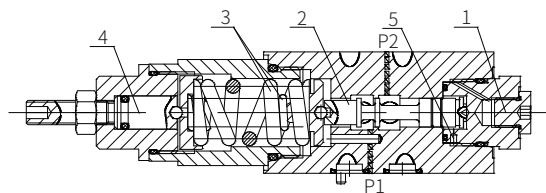


Function description, sectional drawing

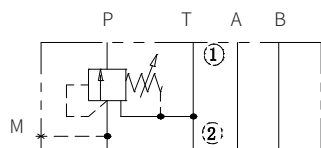
The ZDZ6D valve is sandwich plate type direct operated sequence valve, it is used for secondary circuit pressure dependent sequential switching.

The sequence pressure is setting via the adjusting element (4). The control spool (2) is hold in the initial position by the compression spring (3), the valve is closed. The pressure in port P1 acts on the spool area of the control spool (2) via the control line (5) opposite the compression spring.

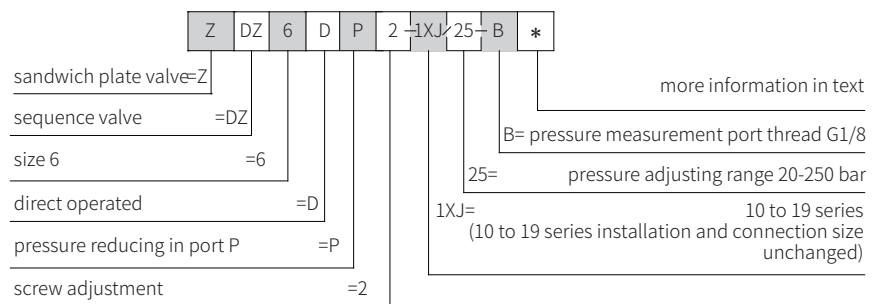
When the pressure in port P1 exceeds the setting value of the spring (3), the control spool (2) moves toward the spring to open the port P. The fluid flows from P1 to P2. The pressure gauge connection (1) is installed to monitor the pressure of the sequence.



Functional symbol: (①= Valve side, ②= Subplate side)



Models and specifications

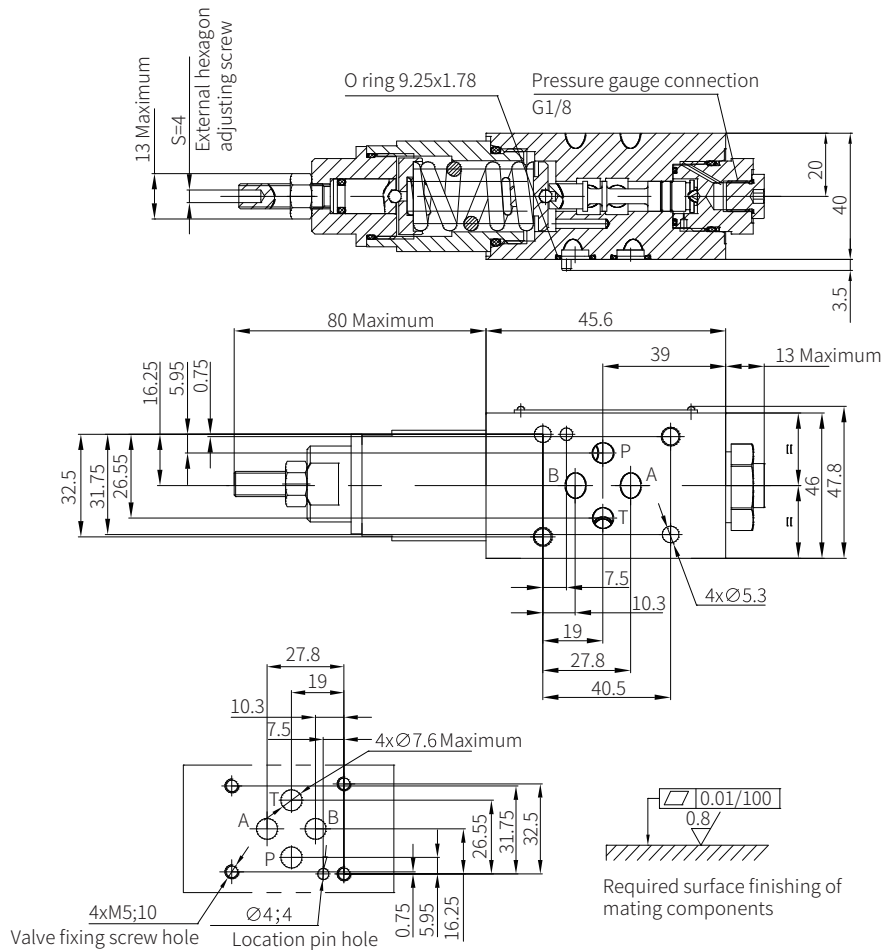


Technical parameters

Medium	Mineral oil - for NBR seal and FKM seal
	Phosphate - for FKM seal
Hydraulic oil temperature range	°C
	-30 to +80 (NBR seal)
	-20 to +80 (FKM seals)
Viscosity range	mm ² /s
	10 to 800
Cleanliness of oil	The maximum allowable pollution level of oil is NAS1638 Class 9 and ISO4406 Class 20/18/15
Maximum working pressure (inlet)	bar
	315
Maximum sequencing pressure	bar
	250
Minimum initial pressure	bar
	20
Maximum flow	L/min
	60

Component size

Size unit: mm



Valve fixing screw:

M5 -10.9 grade GB/T70.1, internal hexagon adjusting screw or LT30.02, stud with LT30.01 nut

Tightening torque $M_A=7.8$ Nm

The length is determined by the stacking height and it must be ordered separately.

Pilot Operated Pressure Sequence Valve

Model: DZ...5XJ



- ◆ Size 10, 25, 32
- ◆ Maximum working pressure 315 bar
- ◆ Maximum flow rate 600 L/min

Contents

Function description, sectional drawing	02-03
Models and specifications	03
Functional symbols	04
Technical parameters	04
Characteristic curve	05-06
Component size	07-08

Features

- Use as pressure valve, sequence valve and bypass valve
- For subplate mounting
- 4 adjusting elements
 - Rotary knob
 - Adjusting screw with protective cap
 - Lockable rotary knob with scale
 - Rotary knob with scale
- 4 pressure ranges
- Check valve, optional